

For Research Use Only

# CoraLite® Plus 488-conjugated C4 Gamma Chain Monoclonal antibody

Catalog Number:CL488-66242



## Basic Information

<b>Catalog Number:</b> CL488-66242	<b>GenBank Accession Number:</b> BC012372	<b>Purification Method:</b> Protein G purification
<b>Size:</b> 100ul , Concentration: 1000 ug/ml by Nanodrop;	<b>GeneID (NCBI):</b> 720	<b>CloneNo.:</b> 2G6A7
<b>Source:</b> Mouse	<b>UNIPROT ID:</b> POCOL4	<b>Recommended Dilutions:</b> IF-P 1:50-1:500
<b>Isotype:</b> IgG1	<b>Full Name:</b> complement component 4A (Rodgers blood group)	<b>Excitation/Emission maxima wavelengths:</b> 493 nm / 522 nm
<b>Immunogen Catalog Number:</b> AG10449	<b>Calculated MW:</b> 1744 aa, 193 kDa	
	<b>Observed MW:</b> 31 kDa	

## Applications

<b>Tested Applications:</b> IF-P	<b>Positive Controls:</b> IF-P: mouse liver tissue,
<b>Species Specificity:</b> human	

## Background Information

Complement C4, a component of the classical complement pathway, has an important role in innate immune function. C4 protein is expressed as a single chain precursor which is proteolytically cleaved into a trimer of alpha, beta, and gamma chains (molecular weights 95, 78, and 31 kDa) prior to secretion. The alpha chain is cleaved to release C4 anaphylatoxin, an antimicrobial peptide and a mediator of local inflammation. This antibody raised against 1543-1744aa of human C4-A protein recognizes C4 gamma chain.

## Storage

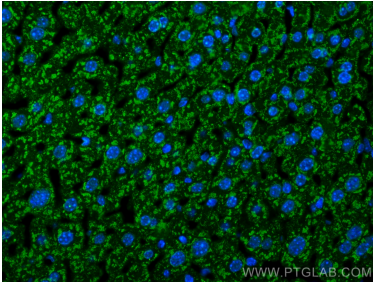
**Storage:**  
Store at -20°C. Avoid exposure to light. Stable for one year after shipment.  
**Storage Buffer:**  
PBS with 50% Glycerol, 0.05% Proclin300, 0.5% BSA, pH 7.3.  
Aliquoting is unnecessary for -20°C storage

For technical support and original validation data for this product please contact:  
T: 1 (888) 4PTGLAB (1-888-478-4522) (toll free in USA), or 1(312) 455-8498 (outside USA)  
E: proteintech@ptglab.com  
W: ptglab.com

This product is exclusively available under Proteintech Group brand and is not available to purchase from any other manufacturer.

---

## Selected Validation Data



Immunofluorescent analysis of (4% PFA) fixed paraffin-embedded mouse liver tissue using CoraLite® Plus 488 C4 Gamma Chain antibody (CL488-66242, Clone: 2G6A7 ) at dilution of 1:200. Heat mediated antigen retrieval with Tris-EDTA buffer (pH 9.0).