

For Research Use Only

# CoraLite®488-conjugated CD13 Monoclonal antibody

Catalog Number:CL488-66211



## Basic Information

<b>Catalog Number:</b> CL488-66211	<b>GenBank Accession Number:</b> BC058928	<b>Purification Method:</b> Protein A purification
<b>Size:</b> 100ul , Concentration: 1000 ug/ml by Nanodrop;	<b>GeneID (NCBI):</b> 290	<b>CloneNo.:</b> 2D8D11
<b>Source:</b> Mouse	<b>ENSEMBL Gene ID:</b> ENSG00000166825	<b>Recommended Dilutions:</b> IF-P 1:50-1:500
<b>Isotype:</b> IgG2a	<b>UNIPROT ID:</b> P15144	<b>Excitation/Emission maxima wavelengths:</b> 491 nm / 516 nm
<b>Immunogen Catalog Number:</b> AG5976	<b>Full Name:</b> alanyl (membrane) aminopeptidase	
	<b>Calculated MW:</b> 110 kDa	

## Applications

<b>Tested Applications:</b> IF-P	<b>Positive Controls:</b> IF-P : human kidney tissue,
<b>Species Specificity:</b> human	

## Background Information

CD13, also named as APN, ANPEP(aminopeptidase N) or PEPN, is a heavily glycosylated, ~150-240 kDa, type-II membrane, expressed by most cells of myeloid origin including monocytes, macrophages, granulocytes, and their hematopoietic precursors. It is also abundantly expressed in the brush border of epithelial cells from renal proximal tubules and small intestine, in prostatic epithelial cells, in bile duct canaliculi, in mast cells, and, in some cases, in fibroblasts and smooth muscle cells. CD13 is a multifunctional protein and plays varying roles in cell migration, cell proliferation, cell differentiation and so on. CD13 participates in angiogenesis generating and modulating angiogenic signals, and can be a marker of angiogenic vessels. CD13 is also a pan-myeloid marker, present on mature granulocytes and monocytes. (PMID: 8805662, 10098327, 18603472, 18097955, 17897790, 17888402, 21339174) And this antibody is conjugated with CL488(Ex/Em 488 nm/515 nm).

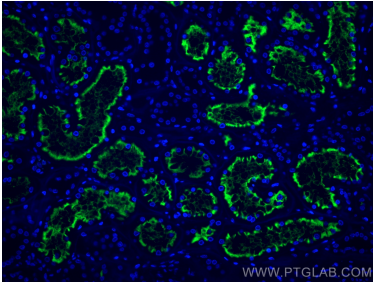
## Storage

**Storage:**  
Store at -20°C. Avoid exposure to light. Stable for one year after shipment.  
**Storage Buffer:**  
PBS with 50% Glycerol, 0.05% Proclin300, 0.5% BSA, pH 7.3.  
**Aliquoting is unnecessary for -20°C storage**

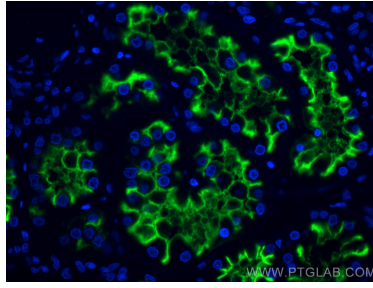
For technical support and original validation data for this product please contact:  
T: 1 (888) 4PTGLAB (1-888-478-4522) (toll free in USA), or 1(312) 455-8498 (outside USA)  
E: proteintech@ptglab.com  
W: ptglab.com

**This product is exclusively available under Proteintech Group brand and is not available to purchase from any other manufacturer.**

## Selected Validation Data



Immunofluorescent analysis of (4% PFA) fixed human kidney tissue using Coralite®488 CD13 antibody (CL488-66211, Clone: 2D8D11) at dilution of 1:200.



Immunofluorescent analysis of (4% PFA) fixed human kidney tissue using Coralite®488 CD13 antibody (CL488-66211, Clone: 2D8D11) at dilution of 1:200.