

For Research Use Only

CoraLite® Plus 488-conjugated TIMM44 Monoclonal antibody

Catalog Number:CL488-66149

Featured Product



Basic Information

Catalog Number:

CL488-66149

Size:

100ul , Concentration: 1000 ug/ml by
Nanodrop;

Source:

Mouse

Isotype:

IgG2c

Immunogen Catalog Number:

AG21389

GenBank Accession Number:

BC033628

GeneID (NCBI):

10469

UNIPROT ID:

O43615

Full Name:

translocase of inner mitochondrial
membrane 44 homolog (yeast)

Calculated MW:

452 aa, 51 kDa

Observed MW:

45 kDa

Purification Method:

Protein A purification

CloneNo.:

4G7D4

Recommended Dilutions:

IF/ICC 1:50-1:500

Excitation/Emission maxima
wavelengths:

493 nm / 522 nm

Applications

Tested Applications:

IF/ICC

Species Specificity:

human, mouse, rat, pig, rabbit

Positive Controls:

IF/ICC : HepG2 cells,

Background Information

Translocase of inner mitochondrial membrane 44 (TIMM44), also known as MIMT44 and TIM44, belongs to the Tim44 family. TIMM44 is a mitochondrial protein located at the inner mitochondrial membrane, which is crucial for the integrity and function of mitochondria. In an ATP-dependent manner, TIMM44 anchors mitochondrial heat shock protein 70 to the translocase of the mitochondrial inner membrane 23 (TIMM23) complex. TIMM44 is essential for mitochondrial pre-protein import into the mitochondrial matrix. TIMM44 is vital for the integrity and function of mitochondria. TIMM44 silencing disrupted mitochondrial functions in endothelial cells, causing mitochondrial protein import arrest, ATP reduction, ROS production, and mitochondrial depolarization, and leading to apoptosis activation (PMID: 36438483, PMID: 37147302, PMID: 38467612). The observed molecular weight of TIMM44 is 45 kDa, indicating a mature form of TIMM44 (PMID: 33891006).

Storage

Storage:

Store at -20°C. Avoid exposure to light. Stable for one year after shipment.

Storage Buffer:

PBS with 50% Glycerol, 0.05% Proclin300, 0.5% BSA, pH 7.3.

Aliquoting is unnecessary for -20°C storage

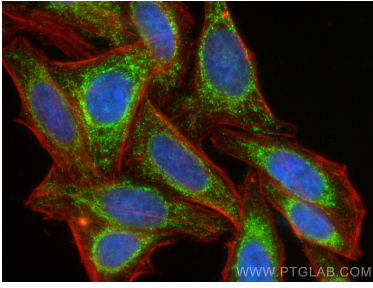
For technical support and original validation data for this product please contact:

T: 1 (888) 4PTGLAB (1-888-478-4522) (toll free
in USA), or 1(312) 455-8498 (outside USA)

E: proteintech@ptglab.com
W: ptglab.com

This product is exclusively available under Proteintech Group brand and is not available to purchase from any other manufacturer.

Selected Validation Data



Immunofluorescent analysis of (4% PFA) fixed HepG2 cells using CoraLite® Plus 488 TIMM44 antibody (CL488-66149, Clone: 4G7D4) at dilution of 1:200, CL594-Phalloidin (red).