

For Research Use Only

CoraLite® Plus 488-conjugated IFITM2/3 Monoclonal antibody

Catalog Number:CL488-66081

Featured Product



Basic Information

Catalog Number:

CL488-66081

GenBank Accession Number:

BC070243

Purification Method:

Protein G purification

Size:

100ul , Concentration: 1000 ug/ml by Nanodrop;

GeneID (NCBI):

10410

CloneNo.:

2E8D12

Source:

Mouse

Full Name:

interferon induced transmembrane protein 3 (1-8U)

Recommended Dilutions:

IF/ICC 1:50-1:500

Isotype:

IgG1

Observed MW:

14 kDa

Excitation/Emission maxima wavelengths:

493 nm / 522 nm

Immunogen Catalog Number:

AG17863

Applications

Tested Applications:

IF/ICC, FC (Intra)

Positive Controls:

IF/ICC : HeLa cells,

Species Specificity:

human

Background Information

IFITM3, also named as interferon-inducible protein 1-8U, belongs to the CD225 family. It is IFN-induced antiviral protein that mediates cellular innate immunity to at least three major human pathogens, namely influenza A H1N1 virus, West Nile virus (WNV), and dengue virus, by inhibiting the early steps of replication. IFITM3 is identified as interferon-induced cellular proteins that restrict infections by retroviruses and filoviruses and of influenza virus and flaviviruses, respectively. IFITM3, the most potent antiviral IFITM, was found to inhibit an uncharacterized early infectious event after VSV endocytosis, but before primary transcription of its viral genome. IFITM proteins are viral restriction factors that can inhibit infection mediated by the influenza A virus (IAV) hemagglutinin (HA) protein. They differentially restrict the entry of a broad range of enveloped viruses, and modulate cellular tropism independently of viral receptor expression. This antibody recognizes both IFITM2 and IFITM3.

Storage

Storage:

Store at -20°C. Avoid exposure to light. Stable for one year after shipment.

Storage Buffer:

PBS with 50% Glycerol, 0.05% Proclin300, 0.5% BSA, pH 7.3.

Aliquoting is unnecessary for -20°C storage

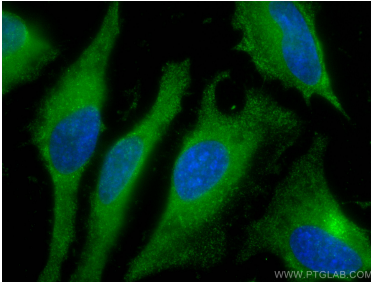
For technical support and original validation data for this product please contact:

T: 1 (888) 4PTGLAB (1-888-478-4522) (toll free in USA), or 1(312) 455-8498 (outside USA)

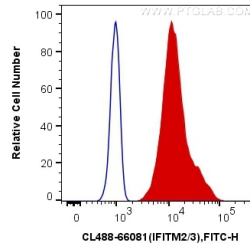
E: proteintech@ptglab.com
W: ptglab.com

This product is exclusively available under Proteintech Group brand and is not available to purchase from any other manufacturer.

Selected Validation Data



Immunofluorescent analysis of (-20°C Methanol) fixed HeLa cells using CoraLite® Plus 488 IFITM2/3 antibody (CL488-66081, Clone: 2E8D12) at dilution of 1:200.



1X10⁶ HeLa cells were intracellularly stained with 0.2 ug CoraLite® Plus 488 Anti-Human IFITM2/3 (CL488-66081, Clone:2E8D12) (red), or 0.2 ug Control Antibody. Cells were fixed with 4% PFA and permeabilized with Flow Cytometry Perm Buffer (PF00011-C).