

For Research Use Only

CoraLite® Plus 488-conjugated Caveolin-1 Monoclonal antibody



Catalog Number: CL488-66067

Featured Product

Basic Information

Catalog Number: CL488-66067	GenBank Accession Number: BC006432	Purification Method: Protein G purification
Size: 100ul , Concentration: 1000 µg/ml by Nanodrop;	GeneID (NCBI): 857	CloneNo.: 6C2B2
Source: Mouse	Full Name: caveolin 1, caveolae protein, 22kDa	Recommended Dilutions: IF 1:50-1:500
Isotype: IgG1	Calculated MW: 22 kDa	Excitation/Emission maxima wavelengths: 493 nm / 522 nm
Immunogen Catalog Number: AG8049	Observed MW: 20-25 kDa	

Applications

Tested Applications: FC, IF	Positive Controls: IF : human skin cancer tissue, human liver cancer tissue
Species Specificity: human, mouse, rat, pig	

Background Information

Caveolin-1 (CAV1), a multifunctional protein, is the main constituent molecule of caveolae and represents a scaffolding molecule for several signaling molecules including epidermal growth factor receptor (PMID: 19641024). Several studies have implicated that a reduced expression of CAV1 was found in cancers including head and neck carcinoma (PMID: 19002186). However, other studies recognize CAV1 as a tumor promoter because CAV1 is overexpressed in various kinds of cancers, especially in oral cancer (PMID: 20558341). Recent study also show that CAV1 is involved in gastric Cancer (PMID: 25339030).

Storage

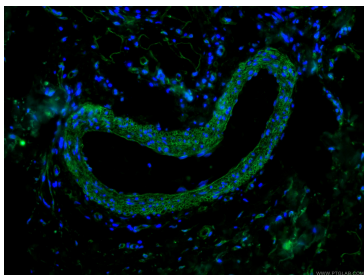
Storage:
Store at -20°C. Avoid exposure to light. Stable for one year after shipment.
Storage Buffer:
PBS with 50% Glycerol, 0.05% Proclin300, 0.5% BSA, pH 7.3.
Aliquoting is unnecessary for -20°C storage

*** 20ul sizes contain 0.1% BSA

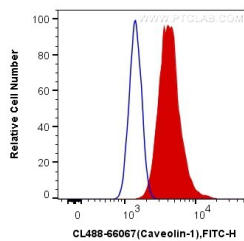
For technical support and original validation data for this product please contact:
T: 1 (888) 4PTGLAB (1-888-478-4522) (toll free in USA), or 1(312) 455-8498 (outside USA)
E: proteintech@ptglab.com
W: ptglab.com

This product is exclusively available under Proteintech Group brand and is not available to purchase from any other manufacturer.

Selected Validation Data



Immunofluorescent analysis of (4% PFA) fixed human skin cancer tissue using CL488-66067 (Caveolin-1 antibody) at dilution of 1:100.



1X10⁶ HeLa cells were intracellularly stained with 0.4 ug CoraLite® Plus 488 Anti-Human Caveolin-1 (CL488-66067, Clone:6C2B2) (red), or 0.4 ug Mouse IgG1 Isotype Control (CL488-66360, Clone: T1F8D3F10) (blue). Cells were fixed with 4% PFA and permeabilized with Flow Cytometry Perm Buffer (PF00011-C).