

For Research Use Only

CoraLite® Plus 488 Anti-Human CD16 (3G8) Mouse IgG2a Recombinant Antibody



Catalog Number: **CL488-65612**

Basic Information

Catalog Number: CL488-65612	GenBank Accession Number: BC017865	Purification Method: Protein A purification
Size: 100tests , 5 µl/test	GeneID (NCBI): 2214	CloneNo.: 3G8
Source: Mouse	ENSEMBL Gene ID: ENSG00000203747	Excitation/Emission maxima wavelengths: 493 nm / 522 nm
Isotype: IgG2a	Full Name: Fc fragment of IgG, low affinity IIIa, receptor (CD16a)	
	Calculated MW: 254 aa, 29 kDa	

Applications

Tested Applications:
FC

Species Specificity:
human

Background Information

CD16 is a 50-70-kDa low affinity Fc receptor found on the surface of natural killer cells, neutrophil polymorphonuclear leukocytes, monocytes and macrophages. CD16 mediates antibody-dependent cellular cytotoxicity (ADCC) and other antibody-dependent responses, such as phagocytosis. CD16 has been identified as Fc receptors FcγRIIIa (CD16a) and FcγRIIIb (CD16b), encoded by two nearly identical genes, FCGR3A and the FCGR3B. Clone 3G8 recognizes both the CD16a and CD16b (PMID: 7592758).

Storage

Storage:
Store at 2-8°C. Avoid exposure to light.

Storage Buffer:
PBS with 0.09% sodium azide and 0.5% BSA.

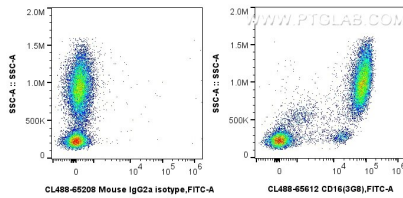
For technical support and original validation data for this product please contact:

T: 1 (888) 4PTGLAB (1-888-478-4522) (toll free
in USA), or 1(312) 455-8498 (outside USA)

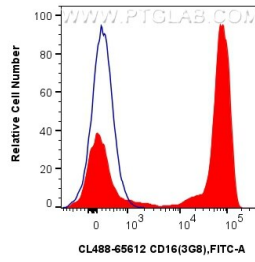
E: proteintech@ptglab.com
W: ptglab.com

This product is exclusively available under Proteintech Group brand and is not available to purchase from any other manufacturer.

Selected Validation Data



1x10⁶ human peripheral blood leukocytes were surface stained with 5 ul CoraLite® Plus 488 Anti-Human CD16 Mouse IgG2a Recombinant Antibody (CL488-65612, Clone: 3G8), or CoraLite® Plus 488 Mouse IgG2a Isotype Control (CL488-65208, Clone: C1.18.4). Cells were incubated with FC Receptor Block prior to staining. Cells were not fixed.



1x10⁶ human peripheral blood leukocytes were surface stained with 5 ul CoraLite® Plus 488 Anti-Human CD16 Mouse IgG2a Recombinant Antibody (CL488-65612, Clone: 3G8) (red), or CoraLite® Plus 488 Mouse IgG2a Isotype Control (CL488-65208, Clone: C1.18.4) (blue). Cells were incubated with FC Receptor Block prior to staining. Cells were not fixed.