

For Research Use Only

# CoraLite® Plus 488 Anti-Rat CD43 (W3/13) Mouse IgG2a Recombinant Antibody



Catalog Number: **CL488-65607**

## Basic Information

Catalog Number:

CL488-65607

Size:

100ug , 500 µg/ml

Source:

Mouse

Isotype:

IgG2a

GenBank Accession Number:

GeneID (NCBI):

24796

Full Name:

sialophorin

Calculated MW:

38 kDa

Purification Method:

Protein A purification

CloneNo.:

W3/13

Excitation/Emission maxima  
wavelengths:

493 nm / 522 nm

## Applications

Tested Applications:

FC

Species Specificity:

rat

## Storage

Storage:

Store at 2-8°C. Avoid exposure to light.

Storage Buffer:

PBS with 0.09% sodium azide.

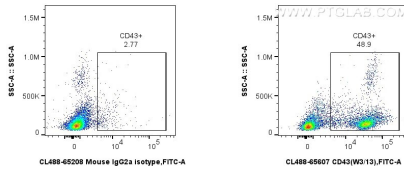
For technical support and original validation data for this product please contact:

T: 1 (888) 4PTGLAB (1-888-478-4522) (toll free  
in USA), or 1(312) 455-8498 (outside USA)

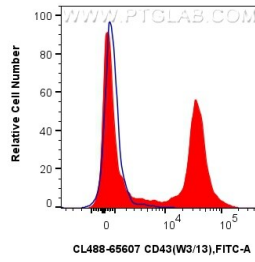
E: [proteintech@ptglab.com](mailto:proteintech@ptglab.com)  
W: [ptglab.com](http://ptglab.com)

This product is exclusively available under Proteintech Group brand and is not available to purchase from any other manufacturer.

## Selected Validation Data



1x10<sup>6</sup> rat splenocytes were surface stained with 0.25ug CoraLite® Plus 488 Anti-Rat CD43 (W3/13) Mouse IgG2a Recombinant Antibody (CL488-65607, Clone: W3/13), or CoraLite® Plus 488 Mouse IgG2a Isotype Control (C1.18.4) (CL488-65208, Clone: C1.18.4). Cells were not fixed.



1x10<sup>6</sup> rat splenocytes were surface stained with 0.25ug CoraLite® Plus 488 Anti-Rat CD43 (W3/13) Mouse IgG2a Recombinant Antibody (CL488-65607, Clone: W3/13) (red), or CoraLite® Plus 488 Mouse IgG2a Isotype Control (C1.18.4) (CL488-65208, Clone: C1.18.4) (blue). Cells were not fixed.