

For Research Use Only

CoraLite® Plus 488 Anti-Human CD2 (TS1/8) Mouse IgG2a Recombinant Antibody

Catalog Number: CL488-65565



Basic Information

Catalog Number: CL488-65565	GenBank Accession Number: BC033583	Purification Method: Protein A purification
Size: 100tests , 5 µl/test	GeneID (NCBI): 914	CloneNo.: TS1/8
Source: Mouse	ENSEMBL Gene ID: ENSG00000116824	Excitation/Emission maxima wavelengths: 493 nm / 522 nm
Isotype: IgG2a	Full Name: CD2 molecule	
	Calculated MW: 351 aa, 39 kDa	

Applications

Tested Applications:
FC

Species Specificity:
human

Background Information

CD2 is a cell surface glycoprotein present on a majority of thymocytes, all mature T cells and subset of NK cells but not on B lymphocytes. It is a pan T-cell marker. CD2 interacts with lymphocyte function-associated antigen (LFA-3/CD58) and CD48/BCM1 to mediate adhesion between T-cells and other cell types. CD2 is implicated in the triggering of T-cells, the cytoplasmic domain is implicated in the signaling function.

Storage

Storage:
Store at 2-8°C. Avoid exposure to light. Stable for one year after shipment.

Storage Buffer:
PBS with 0.09% sodium azide and 0.5% BSA.

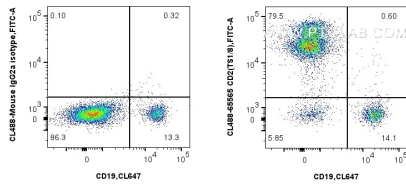
For technical support and original validation data for this product please contact:

T: 1 (888) 4PTGLAB (1-888-478-4522) (toll free in USA), or 1(312) 455-8498 (outside USA)

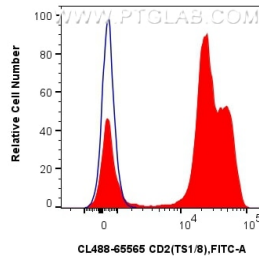
E: proteintech@ptglab.com
W: ptglab.com

This product is exclusively available under Proteintech Group brand and is not available to purchase from any other manufacturer.

Selected Validation Data



1x10⁶ human PBMCs were surface stained with CoraLite® Plus 647 Anti-Human CD19 and 5 ul CoraLite® Plus 488 Anti-Human CD2 (TS1/8) Mouse IgG2a Recombinant Antibody (CL488-65565, Clone: TS1/8) (right), or CoraLite® Plus 488 Mouse IgG2a Isotype Control (C1.18.4) (CL488-65208, Clone: C1.18.4) (left). Cells were not fixed. Lymphocytes were gated.



1x10⁶ human PBMCs were surface stained with 5 ul CoraLite® Plus 488 Anti-Human CD2 (TS1/8) Mouse IgG2a Recombinant Antibody (CL488-65565, Clone: TS1/8)(red), or CoraLite® Plus 488 Mouse IgG2a Isotype Control (C1.18.4) (CL488-65208, Clone: C1.18.4) (blue). Cells were not fixed. Lymphocytes were gated.