

For Research Use Only

CoraLite® Plus 488 Anti-Mouse Ly-6C (HK1.4)



Catalog Number: **CL488-65296**

Basic Information

Catalog Number: CL488-65296	GenBank Accession Number: BC010764	Purification Method: Affinity purification
Size: 100ug , 500 µg/ml	GeneID (NCBI): 17067	CloneNo.: HK1.4
Source: Rat	Full Name: lymphocyte antigen 6 complex, locus C1	Excitation/Emission maxima wavelengths: 493 nm / 522 nm
Isotype: IgG2c		

Applications

Tested Applications:
FC

Species Specificity:
Mouse

Background Information

Ly-6C (lymphocyte antigen 6 complex, locus C) is a 14-17 kDa GPI-linked cell surface antigen that belongs to the Ly-6 family of glycosyl phosphatidylinositol-anchored surface glycoproteins (PMID: 9192663). Ly-6C is expressed on mouse monocytes/macrophages, endothelial cells, granulocytes, thymocytes, and some T cell subsets (PMID: 2849552). The two alleles of Ly-6C, Ly-6C.1 and Ly-6C.2, result in differential expression of this protein on subpopulations of CD4+ T cells (PMID: 15057973; 9126982). Ly-6C has been reported as a marker of memory CD8+ T cells (PMID: 7543536).

Storage

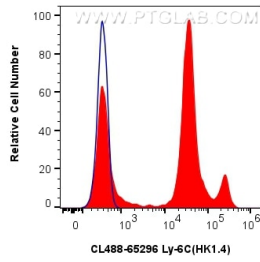
Storage:
Store at 2-8°C. Avoid exposure to light. Stable for one year after shipment.

Storage Buffer:
PBS with 0.09% sodium azide.

For technical support and original validation data for this product please contact:
T: 1 (888) 4PTGLAB (1-888-478-4522) (toll free in USA), or 1(312) 455-8498 (outside USA) E: proteintech@ptglab.com W: ptglab.com

This product is exclusively available under Proteintech Group brand and is not available to purchase from any other manufacturer.

Selected Validation Data



1x10⁶ mouse bone marrow cells were surface stained with 0.25 ug CoraLite® Plus 488 Anti-Mouse Ly-6C (HK1.4) (CL488-65296, Clone: HK1.4) (red), or 0.25 ug Isotype Control (blue). Cells were not fixed.