

For Research Use Only

CoraLite® Plus 488 Anti-Human CD68 (KP1)



Catalog Number: **CL488-65202**

Basic Information

Catalog Number: CL488-65202	GenBank Accession Number: BC015557	Purification Method: Protein G purification
Size: 100tests , 5 µl/test	GeneID (NCBI): 968	CloneNo.: KP1
Source: Mouse	Full Name: CD68 molecule	Excitation/Emission maxima wavelengths: 493 nm / 522 nm
Isotype: IgG1, kappa	Calculated MW: 37 kDa	

Applications

Tested Applications:
FC (Intra)

Species Specificity:
Human

Background Information

CD68 is a type I transmembrane glycoprotein that is highly expressed by human monocytes and tissue macrophages. It belongs to the lysosomal/endosomal-associated membrane glycoprotein (LAMP) family and primarily localizes to lysosomes and endosomes with a smaller fraction circulating to the cell surface. CD68 is also a member of the scavenger receptor family. It may play a role in phagocytic activities of tissue macrophages.

Storage

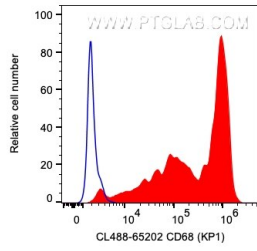
Storage:
Store at 2-8°C. Avoid exposure to light. Stable for one year after shipment.

Storage Buffer:
PBS with 0.1% sodium azide and 0.5% BSA, pH 7.3.

For technical support and original validation data for this product please contact:
T: 1 (888) 4PTGLAB (1-888-478-4522) (toll free in USA), or 1(312) 455-8498 (outside USA) E: proteintech@ptglab.com
W: ptglab.com

This product is exclusively available under Proteintech Group brand and is not available to purchase from any other manufacturer.

Selected Validation Data



1X10⁶ human PBMCs were intracellularly stained with 5 ul CoraLite® Plus 488 Anti-Human CD68 (CL488-65202, Clone:KP1) (red) or unstained (blue). Cells were fixed and permeabilized with Transcription Factor Staining Buffer Kit (PF00011).