

For Research Use Only

# CoraLite® Plus 488 Anti-Human CD1c (L161)



Catalog Number: CL488-65176

## Basic Information

Catalog Number:

CL488-65176

Size:

100 tests, 5 µl/test

Source:

Mouse

Isotype:

IgG1, kappa

GenBank Accession Number:

BC126465

GeneID (NCBI):

911

UNIPROT ID:

P29017

Full Name:

CD1c molecule

Purification Method:

Affinity purification

CloneNo.:

L161

Excitation/Emission maxima  
wavelengths:

493 nm / 522 nm

## Applications

Tested Applications:

FC

Species Specificity:

Human

## Storage

Storage:

Store at 2-8°C. Avoid exposure to light. Stable for one year after shipment.

Storage Buffer:

PBS with 0.09% sodium azide and 0.5% BSA.

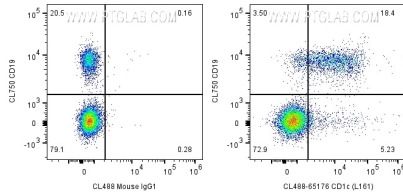
For technical support and original validation data for this product please contact:

T: 1 (888) 4PTGLAB (1-888-478-4522) (toll free  
in USA), or 1(312) 455-8498 (outside USA)

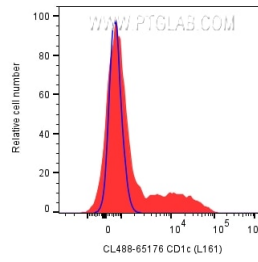
E: [proteintech@ptglab.com](mailto:proteintech@ptglab.com)  
W: [ptglab.com](http://ptglab.com)

This product is exclusively available under Proteintech Group brand and is not available to purchase from any other manufacturer.

## Selected Validation Data



1x10<sup>6</sup> human PBMCs were surface stained with CoraLite® Plus 750 Anti-Human CD19 and 5 ul CoraLite® Plus 488 Anti-Human CD1c (L161) (CL488-65176) or CoraLite® Plus 488 Mouse IgG1 Isotype Control. Cells were not fixed. Lymphocytes were gated.



1x10<sup>6</sup> human PBMCs were surface stained with 5 ul CoraLite® Plus 488 Anti-Human CD1c (L161) (CL488-65176) or CoraLite® Plus 488 Mouse IgG1 Isotype Control. Cells were not fixed. Lymphocytes were gated.