

For Research Use Only

# CoraLite® Plus 488-conjugated DSE Monoclonal antibody

Catalog Number: CL488-60041



## Basic Information

Catalog Number:

CL488-60041

Size:

100ul , Concentration: 1000 ug/ml by 29940

Nanodrop;

Source:

Mouse

Isotype:

IgM

Immunogen Catalog Number:

AG0695

GenBank Accession Number:

BC039245

GeneID (NCBI):

29940

UNIPROT ID:

Q9UL01

Full Name:

dermatan sulfate epimerase

Calculated MW:

958 aa, 110 kDa

Observed MW:

100 kDa

Purification Method:

Euglobulin precipitation

CloneNo.:

2C9F7

Recommended Dilutions:

IF/ICC 1:50-1:500

Excitation/Emission maxima wavelengths:

493 nm / 522 nm

## Applications

Tested Applications:

IF/ICC, FC (Intra)

Species Specificity:

human

Positive Controls:

IF/ICC : HeLa cells,

## Background Information

DSE, also named as SART2 and DSEPI, is an enzyme that converts D-glucuronic acid to L-iduronic acid residues in dermatan sulphate biosynthesis. It is also identified to be a tumour-associated antigen. DSE is recognized by cytotoxic T cells (CTLs) and its enhanced expression in many cancers has been reported. DSE is a potential candidate for a tumour antigen with immunogenicity.

## Storage

Storage:

Store at -20°C. Avoid exposure to light. Stable for one year after shipment.

Storage Buffer:

PBS with 50% Glycerol, 0.05% Proclin300, 0.5% BSA, pH 7.3.

Aliquoting is unnecessary for -20°C storage

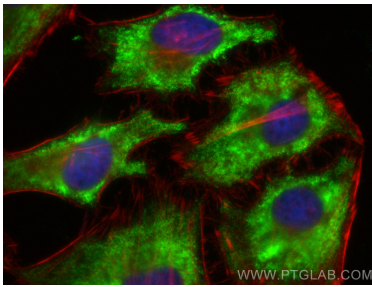
For technical support and original validation data for this product please contact:

T: 1 (888) 4PTGLAB (1-888-478-4522) (toll free in USA), or 1(312) 455-8498 (outside USA)

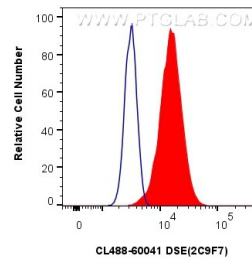
E: [proteintech@ptglab.com](mailto:proteintech@ptglab.com)  
W: [ptglab.com](http://ptglab.com)

This product is exclusively available under Proteintech Group brand and is not available to purchase from any other manufacturer.

## Selected Validation Data



Immunofluorescent analysis of (-20°C Ethanol) fixed HeLa cells using Coralite® Plus 488 DSE antibody (CL488-60041, Clone: 2C9F7 ) at dilution of 1:200, CL594-Phalloidin (red).



1x10<sup>6</sup> HeLa cells were intracellularly stained with 0.4 ug Coralite® Plus 488-conjugated DSE Monoclonal antibody (CL488-60041, Clone:2C9F7) (red), or 0.4 ug Isotype Control (CL488-66360-1) (blue). Cells were fixed with 4% PFA and permeabilized with Flow Cytometry Perm Buffer (PF00011-C).