

For Research Use Only

CoraLite® Plus 488-conjugated Beta Actin Monoclonal antibody

Catalog Number:CL488-60008



Basic Information

Catalog Number: CL488-60008	GenBank Accession Number: BC002409	Purification Method: Caprylic acid/ammonium sulfate precipitation
Size: 100ul , Concentration: 1000 ug/ml by Nanodrop;	GeneID (NCBI): 60	CloneNo.: 7D2C10
Source: Mouse	UNIPROT ID: P60709	Recommended Dilutions: WB 1:2000-1:10000 IF/ICC 1:50-1:500
Isotype: IgM	Full Name: actin, beta	Excitation/Emission maxima wavelengths: 493 nm / 522 nm
Immunogen Catalog Number: AG0297	Calculated MW: 375 aa, 42 kDa	

Applications

Tested Applications: WB, IF/ICC	Positive Controls: WB : HepG2 cells, HeLa cells, HEK-293 cells
Species Specificity: human, mouse, rat, zebrafish, plant	IF/ICC : MCF-7 cells,

Background Information

Beta actin, also named as ACTB and F-Actin, belongs to the actin family. Actins are highly conserved globular proteins that are involved in various types of cell motility and are ubiquitously expressed in all eukaryotic cells. At least six isoforms of actins are known in mammals and other vertebrates: alpha (ACTC1, cardiac muscle 1), alpha 1 (ACTA1, skeletal muscle) and 2 (ACTA2, aortic smooth muscle), beta (ACTB), gamma 1 (ACTG1) and 2 (ACTG2, enteric smooth muscle). Beta and gamma 1 are two non-muscle actin proteins. Most actins consist of 376aa, while ACTG2 (rich in muscles) has 375aa and ACTG1(found in non-muscle cells) has only 374aa. Beta actin has been widely used as the internal control in RT-PCR and Western Blotting as a 42-kDa protein. However, the 41 kDa cleaved fragment of beta actin can be generated during apoptosis process. This antibody is conjugated with CL488(Ex/Em 488 nm/515 nm), and can recognize all the actins.

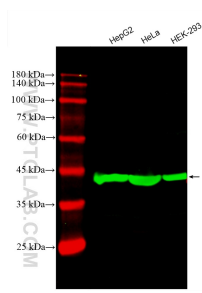
Storage

Storage:
Store at -20°C. Avoid exposure to light. Stable for one year after shipment.
Storage Buffer:
PBS with 50% Glycerol, 0.05% Proclin300, 0.5% BSA, pH 7.3.
Aliquoting is unnecessary for -20°C storage

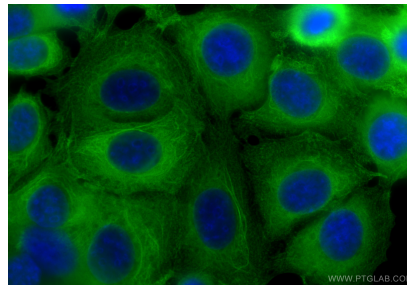
For technical support and original validation data for this product please contact:
T: 1 (888) 4PTGLAB (1-888-478-4522) (toll free in USA), or 1(312) 455-8498 (outside USA)
E: proteintech@ptglab.com
W: ptglab.com

This product is exclusively available under Proteintech Group brand and is not available to purchase from any other manufacturer.

Selected Validation Data



Various lysates were subjected to SDS PAGE followed by western blot with CL488-60008 (Beta Actin antibody) at dilution of 1:5000 incubated at room temperature for 1.5 hours.



Immunofluorescent analysis of (-20°C Methanol) fixed MCF-7 cells using CoraLite® Plus 488 Beta Actin antibody (CL488-60008, Clone: 7D2C10) at dilution of 1:200.