

For Research Use Only

CoraLite® Plus 488-conjugated PPP1CB-Specific Polyclonal antibody



Catalog Number: CL488-55136

Featured Product

Basic Information

Catalog Number:

CL488-55136

Size:

100ul , Concentration: 1000 µg/ml by 5500

Nanodrop;

Source:

Rabbit

Isotype:

IgG

GenBank Accession Number:

NM_002709

GeneID (NCBI):

5500

UNIPROT ID:

P62140

Full Name:

protein phosphatase 1, catalytic subunit, beta isoform

Calculated MW:

37 kDa

Observed MW:

33-40 kDa

Purification Method:

Antigen affinity purification

Recommended Dilutions:

IF/ICC 1:50-1:500

Excitation/Emission maxima wavelengths:

493 nm / 522 nm

Applications

Tested Applications:

IF/ICC, FC (Intra)

Species Specificity:

human, mouse, rat

Positive Controls:

IF/ICC : U2OS cells,

Background Information

PPP1CB, also named as PP-1B, belongs to the PPP phosphatase family and PP-1 subfamily. Protein phosphatase (PP1) is essential for cell division, it participates in the regulation of glycogen metabolism, muscle contractility and protein synthesis. PPP1CB is involved in regulation of ionic conductances and long-term synaptic plasticity. This antibody is specific to PPP1CB.

Storage

Storage:

Store at -20°C. Avoid exposure to light. Stable for one year after shipment.

Storage Buffer:

PBS with 50% Glycerol, 0.05% Proclin300, 0.5% BSA, pH 7.3.

Aliquoting is unnecessary for -20°C storage

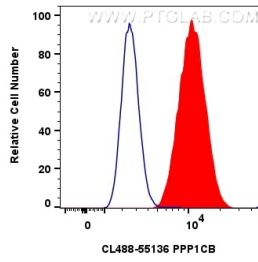
For technical support and original validation data for this product please contact:

T: 1 (888) 4PTGLAB (1-888-478-4522) (toll free in USA), or 1(312) 455-8498 (outside USA)

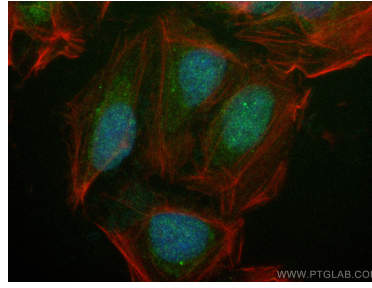
E: proteintech@ptglab.com
W: ptglab.com

This product is exclusively available under Proteintech Group brand and is not available to purchase from any other manufacturer.

Selected Validation Data



1×10^6 U2OS cells were intracellularly stained with 0.8 μ g Coralite® Plus 488 PPP1CB-Specific Polyclonal Antibody (CL488-55136)(red), or 0.8 μ g Coralite® Plus 488-conjugated Rabbit IgG control Rabbit PolyAb (CL488-30000) (blue). Cells were fixed with 4% PFA and permeabilized with Flow Cytometry Perm Buffer (PF00011-C).



Immunofluorescent analysis of (4% PFA) fixed U2OS cells using Coralite® Plus 488 PPP1CB-Specific antibody (CL488-55136) at dilution of 1:200, CL594-Phalloidin (red).