

For Research Use Only

CoraLite® Plus 488-conjugated EGFR (C-terminal) Polyclonal antibody

Catalog Number:CL488-51071



Basic Information

Catalog Number: CL488-51071	GenBank Accession Number: BC094761	Purification Method: Antigen affinity purification
Size: 100ul , Concentration: 1000 ug/ml by Nanodrop;	GeneID (NCBI): 1956	Recommended Dilutions: WB 1:500-1:1000
Source: Rabbit	UNIPROT ID: P00533	Excitation/Emission maxima wavelengths: 493 nm / 522 nm
Isotype: IgG	Full Name: epidermal growth factor receptor (erythroblastic leukemia viral (v-erb-b) oncogene homolog, avian)	
	Calculated MW: 1210 aa, 134 kDa	
	Observed MW: 170 kDa	

Applications

Tested Applications: WB, FC (Intra)	Positive Controls: WB : A431 cells,
Species Specificity: human	

Background Information

EGFR, also named as ERBB1, is a cell-surface receptor for members of the epidermal growth factor family (EGF-family) of extracellular protein ligands. Binding of the protein to a ligand induces receptor dimerization and tyrosine autophosphorylation and leads to cell proliferation. The gene resides on chromosome 7p12, encoding a 170 kDa membrane-associated glycoprotein. Recent studies have shown EGFR plays a critical role in cancer development and progression, including cell proliferation, apoptosis, angiogenesis, and metastatic spread. Mutations in this gene are associated with lung cancer. The antibody is specific to isoform1.

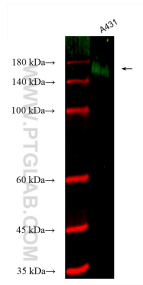
Storage

Storage:
Store at -20°C. Avoid exposure to light. Stable for one year after shipment.
Storage Buffer:
PBS with 50% Glycerol, 0.05% Proclin300, 0.5% BSA, pH 7.3.
Aliquoting is unnecessary for -20°C storage

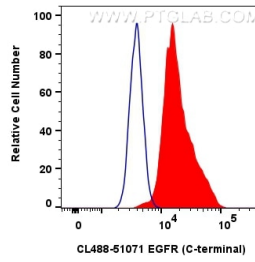
For technical support and original validation data for this product please contact:
T: 1 (888) 4PTGLAB (1-888-478-4522) (toll free in USA), or 1(312) 455-8498 (outside USA)
E: proteintech@ptglab.com
W: ptglab.com

This product is exclusively available under Proteintech Group brand and is not available to purchase from any other manufacturer.

Selected Validation Data



Various lysates were subjected to SDS PAGE followed by western blot with CL488-51071 (EGFR (C-terminal) antibody) at dilution of 1:500 incubated at room temperature for 1.5 hours.



1×10^6 A431 cells were intracellularly stained with 0.8 μ g CoraLite® Plus 488 EGFR (C-Terminal) Polyclonal Antibody (CL488-51071)(red), or 0.8 μ g CoraLite® Plus 488-conjugated Rabbit IgG control Rabbit PolyAb (CL488-30000) (blue). Cells were fixed with 4% PFA and permeabilized with Flow Cytometry Perm Buffer (PF00011-C).