

For Research Use Only

# CoraLite® Plus 488-conjugated WNT8A Polyclonal antibody

Catalog Number:CL488-30518



## Basic Information

<b>Catalog Number:</b> CL488-30518	<b>GenBank Accession Number:</b> NM_001300938	<b>Purification Method:</b> Antigen affinity purification
<b>Size:</b> 100ul , Concentration: 1000 ug/ml by Nanodrop;	<b>GeneID (NCBI):</b> 7478	<b>Recommended Dilutions:</b> IF/ICC 1:50-1:500
<b>Source:</b> Rabbit	<b>UNIPROT ID:</b> Q9H1J5	<b>Excitation/Emission maxima wavelengths:</b> 493 nm / 522 nm
<b>Isotype:</b> IgG	<b>Full Name:</b> wingless-type MMTV integration site family, member 8A	
<b>Immunogen Catalog Number:</b> AG29510	<b>Calculated MW:</b> 39 kDa	
	<b>Observed MW:</b> 39-45 kDa	

## Applications

<b>Tested Applications:</b> IF/ICC	<b>Positive Controls:</b> IF/ICC : HCT 116 cells,
<b>Species Specificity:</b> Human, rat	

## Background Information

WNT8A, also named as WNT8D, belongs to the Wnt family of secreted signaling proteins. It is a ligand for members of the frizzled family of seven transmembrane receptors. These have been implicated in oncogenesis and in several developmental processes, including regulation of cell fate and patterning during embryogenesis. WNT8A may play an important role in the development and differentiation of certain forebrain structures, notably the hippocampus.

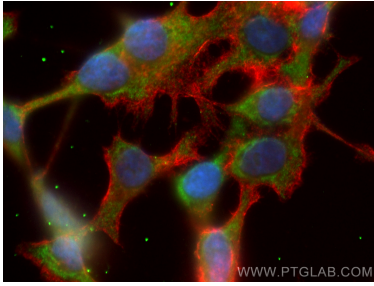
## Storage

**Storage:**  
Store at -20°C. Avoid exposure to light. Stable for one year after shipment.  
**Storage Buffer:**  
PBS with 50% Glycerol, 0.05% Proclin300, 0.5% BSA, pH 7.3.  
Aliquoting is unnecessary for -20°C storage

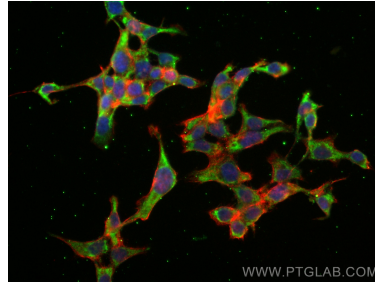
For technical support and original validation data for this product please contact:  
T: 1 (888) 4PTGLAB (1-888-478-4522) (toll free in USA), or 1(312) 455-8498 (outside USA)      E: proteintech@ptglab.com  
W: ptglab.com

This product is exclusively available under Proteintech Group brand and is not available to purchase from any other manufacturer.

## Selected Validation Data



Immunofluorescent analysis of (-20°C Ethanol) fixed HCT 116 cells using CoraLite® Plus 488 WNT8A antibody (CL488-30518) at dilution of 1:200, CL594-Phalloidin (red).



Immunofluorescent analysis of (-20°C Ethanol) fixed HCT 116 cells using CoraLite® Plus 488 WNT8A antibody (CL488-30518) at dilution of 1:200, CL594-Phalloidin (red).