

For Research Use Only

CoraLite® Plus 488-conjugated ATG16L1 Polyclonal antibody



Catalog Number: CL488-29445

Basic Information

Catalog Number: CL488-29445	GenBank Accession Number: BC000061	Purification Method: Antigen affinity purification
Size: 100ul , Concentration: 1000 µg/ml by Nanodrop;	GeneID (NCBI): 55054	Recommended Dilutions: IF 1:50-1:500
Source: Rabbit	UNIPROT ID: Q676U5	Excitation/Emission maxima wavelengths: 493 nm / 522 nm
Isotype: IgG	Full Name: ATG16 autophagy related 16-like 1 (S. cerevisiae)	
Immunogen Catalog Number: AG31318	Calculated MW: 607 aa, 68 kDa	
	Observed MW: 68-75 kDa	

Applications

Tested Applications: IF	Positive Controls: IF : HEK-293 cells,
Species Specificity: Human, mouse, rat	

Background Information

Human ATG16L1 is a 607 amino acid protein (~68 kDa) comprising three major domains: the N-terminal ATG5 binding domain (ATG5-BD), the central coiled-coil domain (CCD) and a predicted C-terminal WD40-domain. ATG16L1 α and β (Atg16L1 α , 63 kDa; and Atg16L1 β , 71 kDa) are the major isoforms expressed in intestinal epithelium and macrophages, and all isoforms encode exon 9, which contains Thr 300. Atg16L1 mediates the cellular degradative process of autophagy and is considered a critical regulator of inflammation based on its genetic association with inflammatory bowel disease. ATG16L1 has been implicated in Crohn's disease. (PMID: 24553140, PMID: 22740627, PMID: 28685931)

Storage

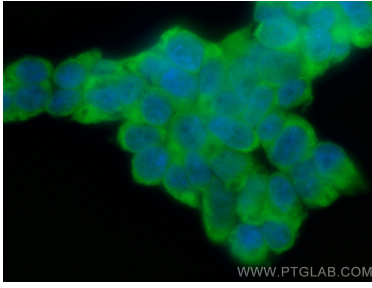
Storage:
Store at -20°C. Avoid exposure to light. Stable for one year after shipment.
Storage Buffer:
PBS with 50% Glycerol, 0.05% Proclin300, 0.5% BSA, pH 7.3.
Aliquoting is unnecessary for -20°C storage

*** 20ul sizes contain 0.1% BSA

For technical support and original validation data for this product please contact:
T: 1 (888) 4PTGLAB (1-888-478-4522) (toll free in USA), or 1(312) 455-8498 (outside USA)
E: proteintech@ptglab.com
W: ptglab.com

This product is exclusively available under Proteintech Group brand and is not available to purchase from any other manufacturer.

Selected Validation Data



Immunofluorescent analysis of (-20°C Ethanol) fixed HEK-293 cells using CoraLite® Plus 488 ATG16L1 antibody (CL488-29445) at dilution of 1:200.