

For Research Use Only

# CoraLite® Plus 488-conjugated CDC2L1 Polyclonal antibody



Catalog Number: CL488-28613

Featured Product

## Basic Information

Catalog Number:

CL488-28613

Size:

100ul , Concentration: 1000 µg/ml by  
Nanodrop;

Source:

Rabbit

Isotype:

IgG

Immunogen Catalog Number:

AG28743

GenBank Accession Number:

NM\_001787

GeneID (NCBI):

984

UNIPROT ID:

P21127

Full Name:

cell division cycle 2-like 1 (PITSLRE  
proteins)

Calculated MW:

93 kDa

Observed MW:

110 kDa

Purification Method:

Antigen affinity purification

Recommended Dilutions:

IF/ICC 1:50-1:500

Excitation/Emission maxima  
wavelengths:

493 nm / 522 nm

## Applications

Tested Applications:

IF/ICC, FC (Intra)

Species Specificity:

human

Positive Controls:

IF/ICC : HUVEC cells,

## Background Information

CDK11 is encoded by two highly homologous genes known as CDC2L1 and CDC2L2. Due to the distinct structure and alternative RNA splicing, the CDC2L gene can produce three different CDK11 isoforms, a larger 110 kDa protein isoform, a mitosis-specific 58 kDa isoform, and a smaller apoptosis-specific 46 kDa isoform. (PMID 27049727)

## Storage

Storage:

Store at -20°C. Avoid exposure to light. Stable for one year after shipment.

Storage Buffer:

PBS with 50% Glycerol, 0.05% Proclin300, 0.5% BSA, pH 7.3.

Aliquoting is unnecessary for -20°C storage

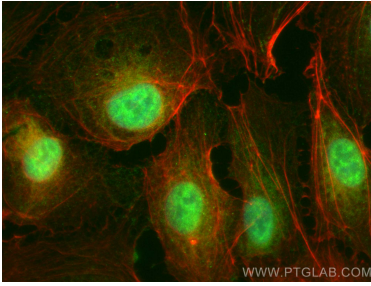
For technical support and original validation data for this product please contact:

T: 1 (888) 4PTGLAB (1-888-478-4522) (toll free  
in USA), or 1(312) 455-8498 (outside USA)

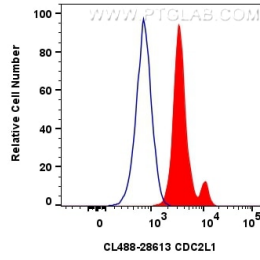
E: [proteintech@ptglab.com](mailto:proteintech@ptglab.com)  
W: [ptglab.com](http://ptglab.com)

This product is exclusively available under Proteintech Group brand and is not available to purchase from any other manufacturer.

## Selected Validation Data



Immunofluorescent analysis of (4% PFA) fixed HUVEC cells using Coralite® Plus 488 CDC2L1 antibody (CL488-28613) at dilution of 1:200, CL594-phalloidin (red).



1x10<sup>6</sup> HeLa cells were intracellularly stained with 0.8 ug Coralite® Plus 488-conjugated CDC2L1 Polyclonal antibody (CL488-28613)(red), or 0.8 ug Coralite® Plus 488-conjugated Rabbit IgG control Rabbit PolyAb (CL488-30000) (blue). Cells were fixed and permeabilized with Transcription Factor Staining Buffer Kit (PF00011).