

For Research Use Only

CoraLite® Plus 488-conjugated WNT2 Polyclonal antibody



Catalog Number: CL488-27214

Featured Product

Basic Information

Catalog Number:

CL488-27214

Size:

100ul , Concentration: 1000 µg/ml by Nanodrop;

Source:

Rabbit

Isotype:

IgG

Immunogen Catalog Number:

AG25845

GenBank Accession Number:

BC029854

GeneID (NCBI):

7472

UNIPROT ID:

P09544

Full Name:

wingless-type MMTV integration site family member 2

Calculated MW:

40 kDa

Observed MW:

40 kDa, 34 kDa

Purification Method:

Antigen affinity purification

Recommended Dilutions:

IF/ICC 1:50-1:500

Excitation/Emission maxima wavelengths:

493 nm / 522 nm

Applications

Tested Applications:

IF/ICC

Species Specificity:

human, mouse, rat

Positive Controls:

IF/ICC : MCF-7 cells,

Background Information

Wnt2 is a secreted glycoprotein that is one of the canonical Wnt ligands. The WNT gene family consists of structurally related genes which encode secreted signaling proteins. These proteins have been implicated in oncogenesis and in several developmental processes, including regulation of cell fate and patterning during embryogenesis. Wnt2 is known to directly regulate β -catenin activity, the key player in proliferation and inflammation. Recently, studies have demonstrated that Wnt2 is overexpressed in various human cancers, including esophageal, gastric, colorectal, breast, lung, cervical, and malignant glioma.

Storage

Storage:

Store at -20°C. Avoid exposure to light. Stable for one year after shipment.

Storage Buffer:

PBS with 50% Glycerol, 0.05% Proclin300, 0.5% BSA, pH 7.3.

Aliquoting is unnecessary for -20°C storage

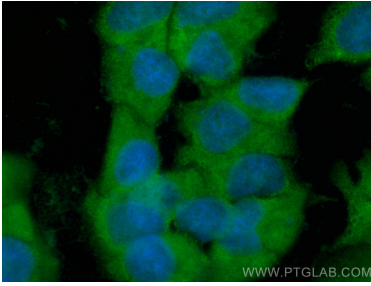
For technical support and original validation data for this product please contact:

T: 1 (888) 4PTGLAB (1-888-478-4522) (toll free in USA), or 1(312) 455-8498 (outside USA)

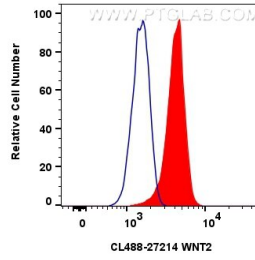
E: proteintech@ptglab.com
W: ptglab.com

This product is exclusively available under Proteintech Group brand and is not available to purchase from any other manufacturer.

Selected Validation Data



Immunofluorescent analysis of (-20°C Methanol) fixed MCF-7 cells using CoraLite® Plus 488 WNT2 antibody (CL488-27214) at dilution of 1:200.



1x10⁶ MCF-7 cells were intracellularly stained with 0.8 ug CoraLite® Plus 488-conjugated WNT2 Polyclonal antibody (CL488-27214)(red), or 0.8 ug CoraLite® Plus 488-conjugated Rabbit IgG control Rabbit PolyAb (CL488-30000) (blue). Cells were fixed with 4% PFA and permeabilized with Flow Cytometry Perm Buffer (PF00011-C).