

For Research Use Only

CoraLite® Plus 488-conjugated GMAP-210 Polyclonal antibody

Catalog Number: CL488-26456

Featured Product



Basic Information

Catalog Number:

CL488-26456

Size:

100ul, Concentration: 1000 ug/ml by Nanodrop;

Source:

Rabbit

Isotype:

IgG

Immunogen Catalog Number:

AG13867

GenBank Accession Number:

BC002656

GeneID (NCBI):

9321

UNIPROT ID:

Q15643

Full Name:

thyroid hormone receptor interactor 11

Calculated MW:

1979 aa, 228 kDa

Observed MW:

230 kDa

Purification Method:

Antigen affinity purification

Recommended Dilutions:

IF/ICC 1:50-1:500

Excitation/Emission maxima wavelengths:

493 nm / 522 nm

Applications

Tested Applications:

IF/ICC

Species Specificity:

human

Positive Controls:

IF/ICC : HeLa cells,

Background Information

Golgi microtubule-associated protein 210 (GMAP-210), also referred to as CEV14, Trip11 or Trip230, is a peripheral Golgi protein that localizes to the cis-Golgi network. GMAP-210 is a 1,978 amino acid coiled-coil member of the golgin family of proteins. Microtubule ends bind to GMAP-210 which functions to link the cis-Golgi network to the minus ends of centrosome-nucleated microtubules. This interaction may be essential for the proper morphology and structural maintenance of the Golgi apparatus. GMAP-210 also associates with thyroid hormone receptor. Overexpression of GMAP-210 disrupts the micro-tubule network and causes a significant enlargement and fragmentation of the Golgi apparatus; it also blocks anterograde and retrograde transport between the ER and the Golgi apparatus.

Storage

Storage:

Store at -20°C. Avoid exposure to light. Stable for one year after shipment.

Storage Buffer:

PBS with 50% Glycerol, 0.05% Proclin300, 0.5% BSA, pH 7.3.

Aliquoting is unnecessary for -20°C storage

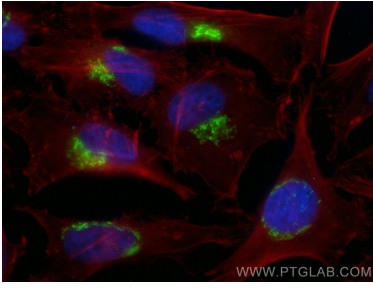
For technical support and original validation data for this product please contact:

T: 1 (888) 4PTGLAB (1-888-478-4522) (toll free in USA), or 1(312) 455-8498 (outside USA)

E: proteintech@ptglab.com
W: ptglab.com

This product is exclusively available under Proteintech Group brand and is not available to purchase from any other manufacturer.

Selected Validation Data



Immunofluorescent analysis of (4% PFA) fixed HeLa cells using CoraLite® Plus 488 GMAP-210 antibody (CL488-26456) at dilution of 1:200, CL594-Phalloidin (red).