

For Research Use Only

CoraLite® Plus 488-conjugated DDHD2 Polyclonal antibody

Catalog Number: CL488-25203

Featured Product



Basic Information

Catalog Number:

CL488-25203

Size:

100ul , Concentration: 1000 ug/ml by Nanodrop;

Source:

Rabbit

Isotype:

IgG

Immunogen Catalog Number:

AG18373

GenBank Accession Number:

BC010504

GeneID (NCBI):

23259

UNIPROT ID:

O94830

Full Name:

DDHD domain containing 2

Calculated MW:

711 aa, 81 kDa

Observed MW:

80-90 kDa

Purification Method:

Antigen affinity purification

Recommended Dilutions:

IF/ICC 1:50-1:500

Excitation/Emission maxima wavelengths:

493 nm / 522 nm

Applications

Tested Applications:

IF/ICC, FC (Intra)

Species Specificity:

human, mouse, rat

Positive Controls:

IF/ICC : HEK-293 cells,

Background Information

DDHD2, also known as KIAA0725p, is a member of the intracellular phospholipase A1 (PLA1) protein family which comprises a group of enzymes that hydrolyze the sn-1 ester bond of phospholipids, producing 2-acyl-lysophospholipids and fatty acids. DDHD2 prefers phosphatidic acid as substrate and has a role in efficient membrane trafficking from the Golgi apparatus to the plasma membrane. The gene of DDHD2 maps to chromosome 8p11.23, and encodes a 711-amino-acid protein with a calculated molecular mass of 81 kDa. It has been reported that DDHD2 immunoblot analysis of various tissue extracts revealed two bands of 90 and 85 kDa (PMID: 11788596).

Storage

Storage:

Store at -20°C. Avoid exposure to light. Stable for one year after shipment.

Storage Buffer:

PBS with 50% Glycerol, 0.05% Proclin300, 0.5% BSA, pH 7.3.

Aliquoting is unnecessary for -20°C storage

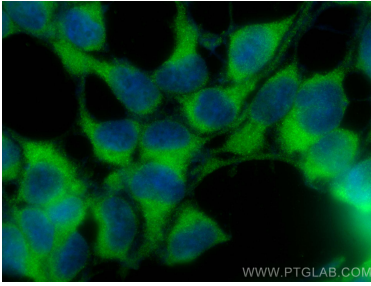
For technical support and original validation data for this product please contact:

T: 1 (888) 4PTGLAB (1-888-478-4522) (toll free in USA), or 1(312) 455-8498 (outside USA)

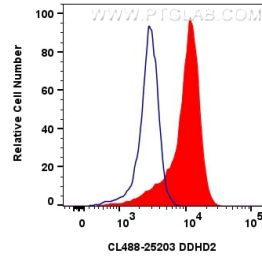
E: proteintech@ptglab.com
W: ptglab.com

This product is exclusively available under Proteintech Group brand and is not available to purchase from any other manufacturer.

Selected Validation Data



Immunofluorescent analysis of (-20°C Ethanol) fixed HEK-293 cells using CoraLite® Plus 488 DDHD2 antibody (CL488-25203) at dilution of 1:200.



1x10⁶ HEK-293 cells were intracellularly stained with 0.8 ug CoraLite® Plus 488 Ddhd2 Polyclonal Antibody (CL488-25203)(red), or 0.8 ug CoraLite® Plus 488-conjugated Rabbit IgG control Rabbit PolyAb (CL488-30000) (blue). Cells were fixed with 4% PFA and permeabilized with Flow Cytometry Perm Buffer (PF00011-C).