

For Research Use Only

# CoraLite® Plus 488-conjugated GEF-H1 Polyclonal antibody

Catalog Number:CL488-24472



## Basic Information

Catalog Number:

CL488-24472

Size:

100ul , Concentration: 1000 ug/ml by  
Nanodrop;

Source:

Rabbit

Isotype:

IgG

Immunogen Catalog Number:

AG13352

GenBank Accession Number:

BC020567

GeneID (NCBI):

9181

UNIPROT ID:

Q92974

Full Name:

rho/rac guanine nucleotide exchange  
factor (GEF) 2

Calculated MW:

112 kDa

Observed MW:

111 kDa

Purification Method:

Antigen affinity purification

Recommended Dilutions:

IF/ICC 1:50-1:500

Excitation/Emission maxima  
wavelengths:

493 nm / 522 nm

## Applications

Tested Applications:

IF/ICC, FC (Intra)

Species Specificity:

human

Positive Controls:

IF/ICC : HepG2 cells,

## Storage

Storage:

Store at -20°C. Avoid exposure to light. Stable for one year after shipment.

Storage Buffer:

PBS with 50% Glycerol, 0.05% Proclin300, 0.5% BSA, pH 7.3.

Aliquoting is unnecessary for -20°C storage

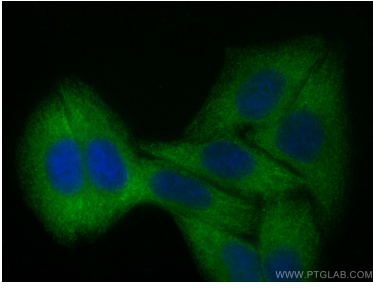
For technical support and original validation data for this product please contact:

T: 1 (888) 4PTGLAB (1-888-478-4522) (toll free  
in USA), or 1(312) 455-8498 (outside USA)

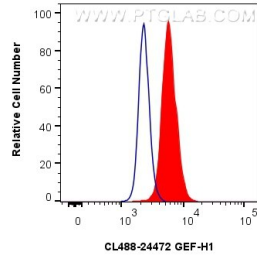
E: proteintech@ptglab.com  
W: ptglab.com

This product is exclusively available under Proteintech  
Group brand and is not available to purchase from any  
other manufacturer.

## Selected Validation Data



Immunofluorescent analysis of (-20°C Ethanol) fixed HepG2 cells using CoraLite® Plus 488 GEF-H1 antibody (CL488-24472) at dilution of 1:50.



1x10<sup>6</sup> HEK-293T cells were intracellularly stained with 0.4 ug CoraLite® Plus 488-conjugated GEF-H1 Polyclonal antibody (CL488-24472)(red), or 0.4 ug CoraLite® Plus 488-conjugated Rabbit IgG control Rabbit PolyAb (CL488-30000) (blue). Cells were fixed with 4% PFA and permeabilized with Flow Cytometry Perm Buffer (PF00011-C).