

For Research Use Only

CoraLite® Plus 488-conjugated Alpha Actin Polyclonal antibody



Catalog Number: CL488-23660

Basic Information

Catalog Number: CL488-23660	GenBank Accession Number: BC012597	Purification Method: Antigen affinity purification
Size: 100ul , Concentration: 1000 µg/ml by 58 Nanodrop;	GeneID (NCBI): 58	Recommended Dilutions: IF 1:50-1:500
Source: Rabbit	Full Name: actin, alpha 1, skeletal muscle	Excitation/Emission maxima wavelengths: 493 nm / 522 nm
Isotype: IgG	Calculated MW: 42 kDa	
Immunogen Catalog Number: AG19151	Observed MW: 40-42 kDa	

Applications

Tested Applications: IF	Positive Controls: IF : H9C2 cells, C2C12 cells
Species Specificity: mouse, rat	

Background Information

Storage

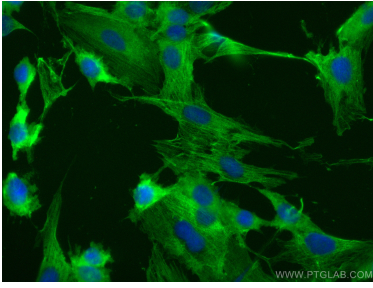
Storage:
Store at -20°C. Avoid exposure to light. Stable for one year after shipment.
Storage Buffer:
PBS with 50% Glycerol, 0.05% Proclin300, 0.5% BSA, pH 7.3.
Aliquoting is unnecessary for -20°C storage

*** 20ul sizes contain 0.1% BSA

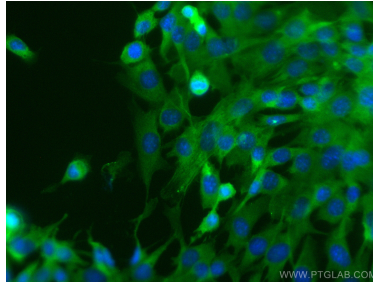
For technical support and original validation data for this product please contact:
T: 1 (888) 4PTGLAB (1-888-478-4522) (toll free in USA), or 1(312) 455-8498 (outside USA) E: proteintech@ptglab.com
W: ptglab.com

This product is exclusively available under Proteintech Group brand and is not available to purchase from any other manufacturer.

Selected Validation Data



Immunofluorescent analysis of (-20°C Methanol) fixed H9C2 cells using CoraLite® Plus 488 Alpha Actin antibody (CL488-23660) at dilution of 1:200.



Immunofluorescent analysis of (-20°C Methanol) fixed C2C12 cells using CoraLite® Plus 488 Alpha Actin antibody (CL488-23660) at dilution of 1:200.