

For Research Use Only

CoraLite® Plus 488-conjugated P15RS Polyclonal antibody

Catalog Number:CL488-23652

Featured Product



Basic Information

Catalog Number:

CL488-23652

Size:

100ul , Concentration: 1000 ug/ml by Nanodrop;

Source:

Rabbit

Isotype:

IgG

Immunogen Catalog Number:

AG20409

GenBank Accession Number:

BC010136

GeneID (NCBI):

55197

UNIPROT ID:

Q96P16

Full Name:

regulation of nuclear pre-mRNA domain containing 1A

Calculated MW:

312 aa, 36 kDa

Observed MW:

36 kDa

Purification Method:

Antigen affinity purification

Recommended Dilutions:

IF/ICC 1:50-1:500

Excitation/Emission maxima wavelengths:

493 nm / 522 nm

Applications

Tested Applications:

IF/ICC, FC (Intra)

Species Specificity:

human, mouse

Positive Controls:

IF/ICC : HeLa cells, HepG2 cells

Background Information

RPRD1A is upregulated in cells overexpressing cyclin-dependent kinase inhibitor p15(INK4b) and may have a role in cell cycle regulation. It contains a RAR domain that is involved in regulation of nuclear pre-mRNA, which suggests that P15RS may act as a nuclear regulation protein [PMID:12470661]. It also interacts with phosphorylated C-terminal heptapeptide repeat domain (CTD) of the largest RNA polymerase II subunit POLR2A, and participates in dephosphorylation of the CTD. Besides, RPRD1A regulates cell cycle genes and attenuates WNT signaling [PMID:20739273], and acts as a negative regulator of cyclin-D1 (CCND1) and cyclin-E (CCNE1) in the cell cycle [PMID:22231121].

Storage

Storage:

Store at -20°C. Avoid exposure to light. Stable for one year after shipment.

Storage Buffer:

PBS with 50% Glycerol, 0.05% Proclin300, 0.5% BSA, pH 7.3.

Aliquoting is unnecessary for -20°C storage

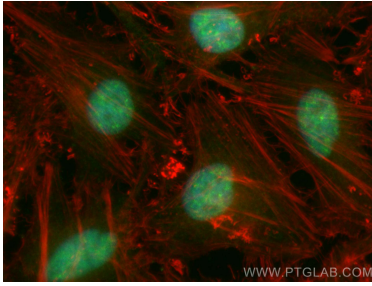
For technical support and original validation data for this product please contact:

T: 1 (888) 4PTGLAB (1-888-478-4522) (toll free in USA), or 1(312) 455-8498 (outside USA)

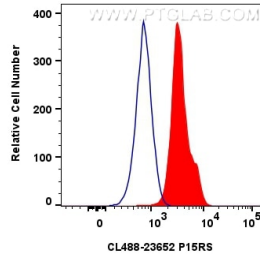
E: proteintech@ptglab.com
W: ptglab.com

This product is exclusively available under Proteintech Group brand and is not available to purchase from any other manufacturer.

Selected Validation Data



Immunofluorescent analysis of (4% PFA) fixed HeLa cells using CoraLite® Plus 488 P15RS antibody (CL488-23652) at dilution of 1:200, CL594-phalloidin (red).



1x10⁶ HeLa cells were intracellularly stained with 0.8 ug CoraLite® Plus 488-conjugated P15RS Polyclonal antibody (CL488-23652)(red), or 0.8 ug CoraLite® Plus 488-conjugated Rabbit IgG control Rabbit PolyAb (CL488-30000) (blue). Cells were fixed with 4% PFA and permeabilized with Flow Cytometry Perm Buffer (PF00011-C).