

For Research Use Only

CoraLite® Plus 488-conjugated SCP2 Polyclonal antibody

Catalog Number: CL488-23006

Featured Product



Basic Information

Catalog Number:

CL488-23006

Size:

100ul , Concentration: 1000 ug/ml by Nanodrop;

Source:

Rabbit

Isotype:

IgG

Immunogen Catalog Number:

AG19215

GenBank Accession Number:

BC005911

GeneID (NCBI):

6342

UNIPROT ID:

P22307

Full Name:

sterol carrier protein 2

Calculated MW:

547 aa, 59 kDa

Observed MW:

13-15 kDa

Purification Method:

Antigen affinity purification

Excitation/Emission maxima wavelengths:

493 nm / 522 nm

Applications

Tested Applications:

FC (Intra)

Species Specificity:

human

Background Information

SCP2 (Sterol carrier protein-2), also called nonspecific lipid-transfer protein, is thought to play a major role in intracellular lipid transport and metabolism. Mutations of SCP2 have been associated with diseases involving abnormalities in lipid trafficking, such as Zellweger syndrome. The alternative splicing generates 58 kDa SCPx and 13-15 kDa SCP2 proteins, both of which contain a C-terminal SCP2 domain. In addition to the SCP2 domain, SCPx also contains an amino-terminal thiolase domain. The proteolytic cleavage of SCPx occurred when it was imported into peroxisomes, giving rise to a 44-46 kDa thiolase and a 13-15 kDa SCP2. 23006-1-AP antibody recognizes the 13-15 kDa SCP2 protein.

Storage

Storage:

Store at -20°C. Avoid exposure to light. Stable for one year after shipment.

Storage Buffer:

PBS with 50% Glycerol, 0.05% Proclin300, 0.5% BSA, pH 7.3.

Aliquoting is unnecessary for -20°C storage

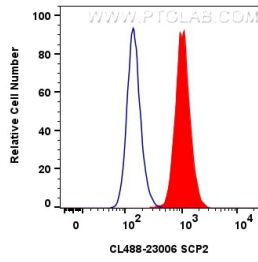
For technical support and original validation data for this product please contact:

T: 1 (888) 4PTGLAB (1-888-478-4522) (toll free in USA), or 1(312) 455-8498 (outside USA)

E: proteintech@ptglab.com
W: ptglab.com

This product is exclusively available under Proteintech Group brand and is not available to purchase from any other manufacturer.

Selected Validation Data



1x10⁶ HepG2 cells were intracellularly stained with 0.8 ug Coralite® Plus 488 Scp2 Polyclonal Antibody (CL488-23006)(red), or 0.8 ug Coralite® Plus 488-conjugated Rabbit IgG control Rabbit PolyAb (CL488-30000) (blue). Cells were fixed with 4% PFA and permeabilized with Flow Cytometry Perm Buffer (PF00011-C).