

For Research Use Only

# CoraLite® Plus 488-conjugated IGF2BP1 Polyclonal antibody

Catalog Number: CL488-22803

Featured Product



## Basic Information

### Catalog Number:

CL488-22803

### Size:

100ul , Concentration: 1000 µg/ml by Nanodrop;

### Source:

Rabbit

### Isotype:

IgG

### Immunogen Catalog Number:

AG18859

### GenBank Accession Number:

BC156957

### GeneID (NCBI):

10642

### UNIPROT ID:

Q9NZI8

### Full Name:

insulin-like growth factor 2 mRNA binding protein 1

### Calculated MW:

577 aa, 63 kDa

### Observed MW:

65-70 kDa

### Purification Method:

Antigen affinity purification

### Recommended Dilutions:

IF/ICC 1:50-1:500

### Excitation/Emission maxima wavelengths:

493 nm / 522 nm

## Applications

### Tested Applications:

IF/ICC

### Species Specificity:

human, mouse, rat

### Positive Controls:

IF/ICC : A375 cells,

## Background Information

IGF2BP1, also named as CRDBP, VICKZ1, ZBP1, is a 577 amino acid protein, which belongs to the RRM IMP/VICKZ family. IGF2BP1 can form homodimers and heterodimers with IGF2BP1 and IGF2BP3. IGF2BP1 is mainly expressed in the embryo, including in fetal liver, fetal lung, fetal kidney, fetal thymus and also expressed follicles of ovary, as well as in gonocytes of testis, spermatogonia, semen, oocytes and placenta. IGF2BP1 is Expressed in various cancers, including testis and lung cancers, as well as kidney, prostate and trachea cancers. IGF2BP1 as RNA-binding factor that recruits target transcripts to cytoplasmic protein-RNA complexes (mRNPs). It also modulates the rate and location at which target transcripts encounter the translational apparatus and shields them from endonuclease attacks or microRNA-mediated degradation. The calculated molecular weight of IGF2BP1 is 63 kDa, but modified IGF2BP1 is about 65-70 kDa.

## Storage

### Storage:

Store at -20°C. Avoid exposure to light. Stable for one year after shipment.

### Storage Buffer:

PBS with 50% Glycerol, 0.05% Proclin300, 0.5% BSA, pH 7.3.

Aliquoting is unnecessary for -20°C storage

For technical support and original validation data for this product please contact:

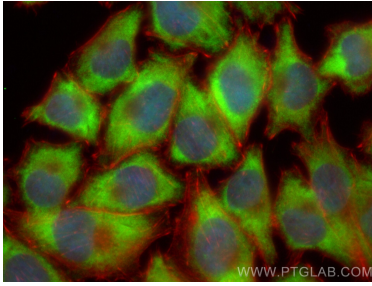
T: 1 (888) 4PTGLAB (1-888-478-4522) (toll free in USA), or 1(312) 455-8498 (outside USA)

E: [proteintech@ptglab.com](mailto:proteintech@ptglab.com)  
W: [ptglab.com](http://ptglab.com)

This product is exclusively available under Proteintech Group brand and is not available to purchase from any other manufacturer.

---

## Selected Validation Data



Immunofluorescent analysis of (-20°C Ethanol) fixed A375 cells using CoraLite® Plus 488 IGF2BP1 antibody (CL488-22803) at dilution of 1:200, CL594-Phalloidin (red).