

For Research Use Only

# CoraLite®488-conjugated IFIH1 Polyclonal antibody

Catalog Number:CL488-21775

Featured Product



## Basic Information

<b>Catalog Number:</b> CL488-21775	<b>GenBank Accession Number:</b> BC111750	<b>Purification Method:</b> Antigen affinity purification
<b>Size:</b> 100ul , Concentration: 1000 ug/ml by Nanodrop;	<b>GeneID (NCBI):</b> 64135	<b>Recommended Dilutions:</b> IF-P 1:50-1:500
<b>Source:</b> Rabbit	<b>UNIPROT ID:</b> Q9BYX4	<b>Excitation/Emission maxima wavelengths:</b> 491 nm / 516 nm
<b>Isotype:</b> IgG	<b>Full Name:</b> interferon induced with helicase C domain 1	
<b>Immunogen Catalog Number:</b> AG16467	<b>Calculated MW:</b> 1025 aa, 117 kDa	
	<b>Observed MW:</b> 117-125 kDa	

## Applications

<b>Tested Applications:</b> IF-P	<b>Positive Controls:</b> IF-P: mouse skeletal muscle tissue,
<b>Species Specificity:</b> human, mouse	

## Background Information

IFIH1 (Interferon-induced helicase C domain-containing protein 1) is a putative RNA helicase that is upregulated in response to treatment with IFNB or IFNB and MEZ. It is also named as MDA5 and RH116. Ectopic expression of MDA5 in melanoma cells resulted in reduced colony formation, suggesting an interaction of the CARD and apoptotic signal molecules. Functional analysis indicated that MDA5 is an RNA-dependent ATPase. And this antibody is CL488(Ex/Em 488 nm/515 nm) conjugated.

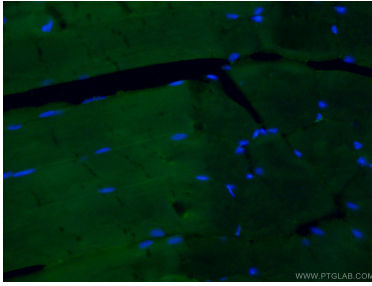
## Storage

**Storage:**  
Store at -20°C. Avoid exposure to light. Stable for one year after shipment.  
**Storage Buffer:**  
PBS with 50% Glycerol, 0.05% Proclin300, 0.5% BSA, pH 7.3.  
Aliquoting is unnecessary for -20°C storage

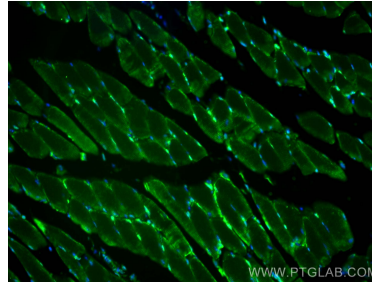
For technical support and original validation data for this product please contact:  
T: 1 (888) 4PTGLAB (1-888-478-4522) (toll free in USA), or 1(312) 455-8498 (outside USA)      E: proteintech@ptglab.com  
W: ptglab.com

This product is exclusively available under Proteintech Group brand and is not available to purchase from any other manufacturer.

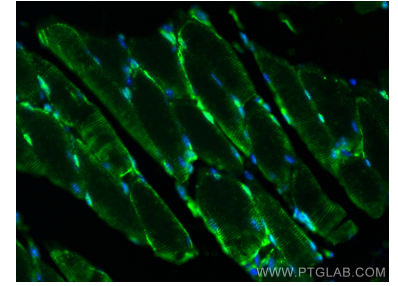
## Selected Validation Data



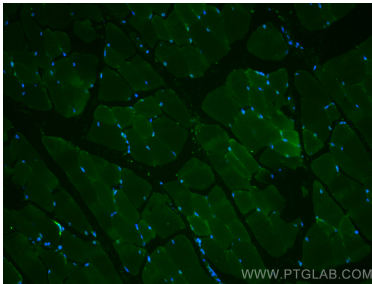
Immunofluorescent analysis of (4% PFA) fixed mouse skeletal muscle tissue using CL488-21775 (IFIH1 antibody) at dilution of 1:100.



Immunofluorescent analysis of (4% PFA) fixed mouse skeletal muscle tissue using CoraLite@488 IFIH1 antibody (CL488-21775) at dilution of 1:200.



Immunofluorescent analysis of (4% PFA) fixed mouse skeletal muscle tissue using CoraLite@488 IFIH1 antibody (CL488-21775) at dilution of 1:200.



Immunofluorescent analysis of (4% PFA) fixed mouse skeletal muscle tissue using CoraLite@488 IFIH1 antibody (CL488-21775) at dilution of 1:200.