

For Research Use Only

CoraLite® Plus 488-conjugated SMMHC Polyclonal antibody



Catalog Number: CL488-21404

Basic Information

Catalog Number: CL488-21404	GenBank Accession Number: BC104906	Purification Method: Antigen affinity purification
Size: 100ul , Concentration: 1000 µg/ml by Nanodrop;	GeneID (NCBI): 4629	Recommended Dilutions: IF/ICC 1:50-1:500
Source: Rabbit	UNIPROT ID: P35749	Excitation/Emission maxima wavelengths: 493 nm / 522 nm
Isotype: IgG	Full Name: myosin, heavy chain 11, smooth muscle	
Immunogen Catalog Number: AG16114	Calculated MW: 1979 aa, 228 kDa	
	Observed MW: 200 kDa	

Applications

Tested Applications: IF	Positive Controls: IF/ICC : HeLa cells,
Species Specificity: human, mouse, rat	

Background Information

SMMHC (smooth muscle myosin heavy chain; MYH11) is a contractile protein of smooth muscle cells. It is specifically expressed in cells derived from smooth muscle lineages. SMMHC is used as vascular smooth muscle cell (vSMC) contractile marker. It is also an excellent marker for myoepithelial cells, with no or few cross-reaction with myofibroblasts, thus very useful in the evaluation of stromal invasion.

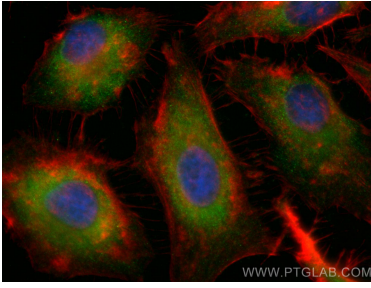
Storage

Storage:
Store at -20°C. Avoid exposure to light. Stable for one year after shipment.
Storage Buffer:
PBS with 50% Glycerol, 0.05% Proclin300, 0.5% BSA, pH 7.3.
Aliquoting is unnecessary for -20°C storage

For technical support and original validation data for this product please contact:
T: 1 (888) 4PTGLAB (1-888-478-4522) (toll free in USA), or 1(312) 455-8498 (outside USA)
E: proteintech@ptglab.com
W: ptglab.com

This product is exclusively available under Proteintech Group brand and is not available to purchase from any other manufacturer.

Selected Validation Data



Immunofluorescent analysis of (-20°C Ethanol) fixed HeLa cells using CoraLite® Plus 488 SMMHC antibody (CL488-21404) at dilution of 1:200, CL594-phalloidin (red).