

For Research Use Only

CoraLite® Plus 488-conjugated CHCHD4 Polyclonal antibody

Catalog Number: CL488-21090

Featured Product



Basic Information

Catalog Number:

CL488-21090

Size:

100ul , Concentration: 1000 ug/ml by
Nanodrop;

Source:

Rabbit

Isotype:

IgG

Immunogen Catalog Number:

AG15339

GenBank Accession Number:

BC033775

GeneID (NCBI):

131474

UNIPROT ID:

Q8N4Q1

Full Name:

coiled-coil-helix-coiled-coil-helix
domain containing 4

Calculated MW:

142 aa, 16 kDa

Observed MW:

22 kDa

Purification Method:

Antigen affinity purification

Recommended Dilutions:

IF/ICC 1:50-1:500

Excitation/Emission maxima wavelengths:

493 nm / 522 nm

Applications

Tested Applications:

IF/ICC

Species Specificity:

human, mouse, rat

Positive Controls:

IF/ICC : HeLa cells, A431 cells

Background Information

CHCHD4, a component of human mitochondria, belongs to a protein family. It functions as chaperone and catalyzes the formation of disulfide bonds in substrate proteins, such as COX17. It is required for the import and folding of small cysteine-containing proteins (small Tim) in the mitochondrial intermembrane space (IMS).

Storage

Storage:

Store at -20°C. Avoid exposure to light. Stable for one year after shipment.

Storage Buffer:

PBS with 50% Glycerol, 0.05% Proclin300, 0.5% BSA, pH 7.3.

Aliquoting is unnecessary for -20°C storage

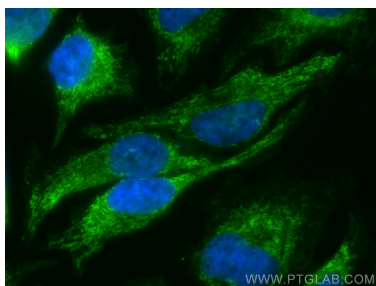
For technical support and original validation data for this product please contact:

T: 1 (888) 4PTGLAB (1-888-478-4522) (toll free
in USA), or 1(312) 455-8498 (outside USA)

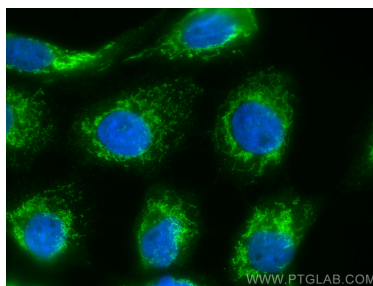
E: proteintech@ptglab.com
W: ptglab.com

This product is exclusively available under Proteintech Group brand and is not available to purchase from any other manufacturer.

Selected Validation Data



Immunofluorescent analysis of (4% PFA) fixed HeLa cells using CoraLite® Plus 488 CHCHD4 antibody (CL488-21090) at dilution of 1:200.



Immunofluorescent analysis of (4% PFA) fixed A431 cells using CoraLite® Plus 488 CHCHD4 antibody (CL488-21090) at dilution of 1:200.