

For Research Use Only

CoraLite® Plus 488-conjugated KLF5 Polyclonal antibody



Catalog Number: CL488-21017

Featured Product

Basic Information

Catalog Number:

CL488-21017

Size:

100ul, Concentration: 1000 µg/ml by
Nanodrop;

Source:

Rabbit

Isotype:

IgG

Immunogen Catalog Number:

AG15267

GenBank Accession Number:

BC042131

GeneID (NCBI):

688

UNIPROT ID:

Q13887

Full Name:

Kruppel-like factor 5 (intestinal)

Calculated MW:

457 aa, 51 kDa

Observed MW:

51-55 kDa

Purification Method:

Antigen affinity purification

Recommended Dilutions:

IF/ICC 1:50-1:500

Excitation/Emission maxima
wavelengths:

493 nm / 522 nm

Applications

Tested Applications:

IF/ICC, FC (Intra)

Species Specificity:

human

Positive Controls:

IF/ICC : HeLa cells,

Background Information

KLF5, also known as BTEB2 and IKLF, is a member of the Krueppel-like transcription factor family. It is a transcription factor for SMemb/non-muscle myosin heavy chain-B (NMHC-B). It is a molecular marker of phenotypically modulated smooth-muscle cells. KLF5 seems to be a key element linking external stress and cardiovascular remodeling. This antibody detects the 50-60 kDa isoform 1 of KLF5. The antibody can recognize isoform 2 (33 kDa) and isoform 3 (18 kDa) too. 85 kDa, 95 kDa and 120 kDa of SUMOylated KLF5 were detected (PMID: 18500350).

Storage

Storage:

Store at -20°C. Avoid exposure to light. Stable for one year after shipment.

Storage Buffer:

PBS with 50% Glycerol, 0.05% Proclin300, 0.5% BSA, pH 7.3.

Aliquoting is unnecessary for -20°C storage

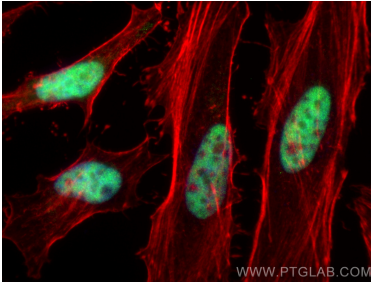
For technical support and original validation data for this product please contact:

T: 1 (888) 4PTGLAB (1-888-478-4522) (toll free
in USA), or 1(312) 455-8498 (outside USA)

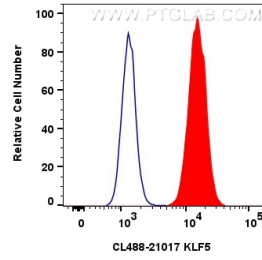
E: proteintech@ptglab.com
W: ptglab.com

This product is exclusively available under Proteintech Group brand and is not available to purchase from any other manufacturer.

Selected Validation Data



Immunofluorescent analysis of (4% PFA) fixed HeLa cells using Coralite® Plus 488 KLF5 antibody (CL488-21017) at dilution of 1:200, CL594-Phalloidin (red).



1x10⁶ A549 cells were intracellularly stained with 0.8 ug Coralite® Plus 488 Klf5 Polyclonal Antibody (CL488-21017)(red), or 0.8 ug Coralite® Plus 488-conjugated Rabbit IgG control Rabbit PolyAb (CL488-30000) (blue). Cells were fixed and permeabilized with Transcription Factor Staining Buffer Kit (PF00011).