

For Research Use Only

CoraLite® Plus 488-conjugated Caldesmon Polyclonal antibody

Catalog Number: CL488-20887

Featured Product



Basic Information

Catalog Number:

CL488-20887

Size:

100ul , Concentration: 1000 ug/ml by Nanodrop;

Source:

Rabbit

Isotype:

IgG

Immunogen Catalog Number:

AG13676

GenBank Accession Number:

BC040354

GeneID (NCBI):

800

UNIPROT ID:

Q05682

Full Name:

caldesmon 1

Calculated MW:

538 aa, 63 kDa

Observed MW:

70-80 kDa

Purification Method:

Antigen affinity purification

Recommended Dilutions:

IF-P 1:50-1:500

IF/ICC 1:50-1:500

Excitation/Emission maximum wavelengths:

493 nm / 522 nm

Applications

Tested Applications:

IF/ICC, IF-P

Species Specificity:

human, mouse

Positive Controls:

IF-P : mouse heart tissue,

IF/ICC : HeLa cells,

Background Information

Caldesmon (CALD1), a protein found in the cytoskeleton, plays an important role in proliferation, apoptosis, cell motility, adhesion, receptor function, and second messenger pathways. Caldesmon is a substrate of cdc2 kinase and Erk1/2 MAPK, and phosphorylation by either of these kinases reverses the inhibitory effects of caldesmon. Caldesmon(CALD1) is a prognostic biomarker and correlated with bladder cancer(PMID: 34733993) and immune infiltrates in gastric cancers(PMID: 34189308).

Storage

Storage:

Store at -20°C. Avoid exposure to light. Stable for one year after shipment.

Storage Buffer:

PBS with 50% Glycerol, 0.05% Proclin300, 0.5% BSA, pH 7.3.

Aliquoting is unnecessary for -20°C storage

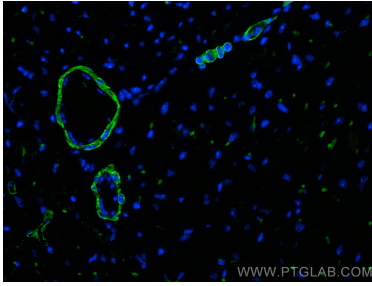
For technical support and original validation data for this product please contact:

T: 1 (888) 4PTGLAB (1-888-478-4522) (toll free in USA), or 1(312) 455-8498 (outside USA)

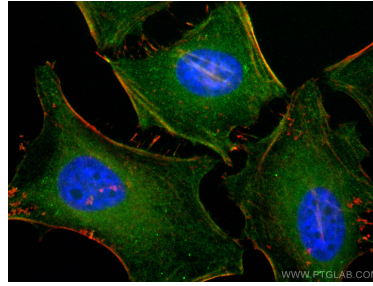
E: proteintech@ptglab.com
W: ptglab.com

This product is exclusively available under Proteintech Group brand and is not available to purchase from any other manufacturer.

Selected Validation Data



Immunofluorescent analysis of (4% PFA) fixed paraffin-embedded mouse heart tissue using CoraLite® Plus 488 Caldesmon antibody (CL488-20887) at dilution of 1:200. Heat mediated antigen retrieval with Tris-EDTA buffer (pH 9.0).



Immunofluorescent analysis of (4% PFA) fixed HeLa cells using CoraLite® Plus 488 Caldesmon antibody (CL488-20887) at dilution of 1:200, CL594-phalloidin (red).