

For Research Use Only

# CoraLite® Plus 488-conjugated TMC1 Polyclonal antibody

Catalog Number:CL488-20718



## Basic Information

**Catalog Number:**

CL488-20718

**Size:**

100ul , Concentration: 1000 ug/ml by Nanodrop;

**Source:**

Rabbit

**Isotype:**

IgG

**GenBank Accession Number:**

NM\_138691

**GeneID (NCBI):**

117531

**UNIPROT ID:**

Q8TDI8

**Full Name:**

transmembrane channel-like 1

**Calculated MW:**

88 kDa

**Observed MW:**

88 kDa

**Purification Method:**

Antigen affinity purification

**Recommended Dilutions:**

IF-P 1:50-1:500

**Excitation/Emission maxima wavelengths:**

493 nm / 522 nm

## Applications

**Tested Applications:**

IF-P

**Species Specificity:**

human, mouse, rat

**Positive Controls:**

IF-P : mouse brain tissue,

## Background Information

Transmembrane channel-like protein 1 (TMC1), is an integral membrane protein with six transmembrane domains and cytoplasmically oriented N- and C- termini (PMID: 20672865). Human TMC1 and mouse Tmc1 mRNA expression were detected in human fetal cochlea and inner-ear tissue of postnatal mouse, respectively. TMC1 is required for cochlear hair-cell function (PMID: 11850618). It is a component of hair cell transduction channels and contributes to permeation properties (PMID: 23871232). Mutations in TMC1 gene can cause progressive postlingual hearing loss and profound prelingual deafness (PMID: 11850618). The antibody is specific to TMC1.

## Storage

**Storage:**

Store at -20°C. Avoid exposure to light. Stable for one year after shipment.

**Storage Buffer:**

PBS with 50% Glycerol, 0.05% Proclin300, 0.5% BSA, pH 7.3.

Aliquoting is unnecessary for -20°C storage

For technical support and original validation data for this product please contact:

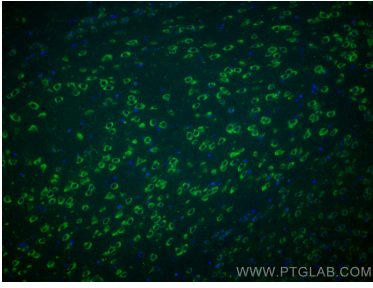
T: 1 (888) 4PTGLAB (1-888-478-4522) (toll free in USA), or 1(312) 455-8498 (outside USA)

E: [proteintech@ptglab.com](mailto:proteintech@ptglab.com)  
W: [ptglab.com](http://ptglab.com)

**This product is exclusively available under Proteintech Group brand and is not available to purchase from any other manufacturer.**

---

## Selected Validation Data



Immunofluorescent analysis of (4% PFA) fixed paraffin-embedded mouse brain tissue using CoraLite® Plus 488 TMC1 antibody (CL488-20718) at dilution of 1:200. Heat mediated antigen retrieval with Tris-EDTA buffer (pH 9.0).