

For Research Use Only

# CoraLite® Plus 488-conjugated PRDX1 Polyclonal antibody



Catalog Number: CL488-20568

Featured Product

## Basic Information

Catalog Number:

CL488-20568

Size:

100ul, Concentration: 1000 µg/ml by  
Nanodrop;

Source:

Rabbit

Isotype:

IgG

GenBank Accession Number:

NM\_002574

GeneID (NCBI):

5052

UNIPROT ID:

Q06830

Full Name:

peroxiredoxin 1

Calculated MW:

22 kDa

Observed MW:

23 kDa

Purification Method:

Antigen affinity purification

Recommended Dilutions:

IF/ICC 1:50-1:500

Excitation/Emission maxima  
wavelengths:

493 nm / 522 nm

## Applications

Tested Applications:

IF/ICC, FC (Intra)

Species Specificity:

human, mouse, rat

Positive Controls:

IF/ICC : HeLa cells,

## Background Information

PRDX1(Peroxiredoxin-1), also named as PAGA, PAGB, TDPX2, PAG or NKEF-A, belongs to the ahpC/TSA family. PRDX1 is a thiol reductase that plays critical roles in oxidative and thermal stress defense mechanisms through its abilities to metabolize H<sub>2</sub>O<sub>2</sub> and act as a molecular chaperone, respectively. PRDX1 might participate in the signaling cascades of growth factors and tumor necrosis factor- $\alpha$  by regulating the intracellular concentrations of H<sub>2</sub>O<sub>2</sub> (PMID: 9497357). It reduces an intramolecular disulfide bond in GDPD5 that gates the ability to GDPD5 to drive postmitotic motor neuron differentiation. PRDX1 can form a dimer, and also can be phosphorylated on Thr-90 during the M-phase, which leads to a more than 80% decrease in enzymatic activity (PMID: 22583657, 11986303). The antibody is specific to PRDX1.

## Storage

Storage:

Store at -20°C. Avoid exposure to light. Stable for one year after shipment.

Storage Buffer:

PBS with 50% Glycerol, 0.05% Proclin300, 0.5% BSA, pH 7.3.

Aliquoting is unnecessary for -20°C storage

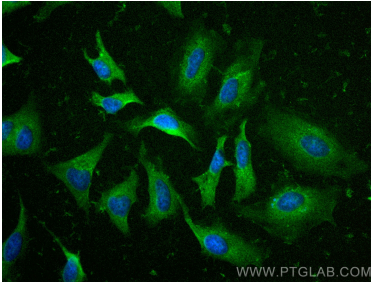
For technical support and original validation data for this product please contact:

T: 1 (888) 4PTGLAB (1-888-478-4522) (toll free  
in USA), or 1(312) 455-8498 (outside USA)

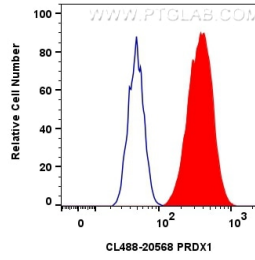
E: [proteintech@ptglab.com](mailto:proteintech@ptglab.com)  
W: [ptglab.com](http://ptglab.com)

This product is exclusively available under Proteintech Group brand and is not available to purchase from any other manufacturer.

## Selected Validation Data



Immunofluorescent analysis of (-20°C Ethanol) fixed HeLa cells using CoraLite® Plus 488 PRDX1 antibody (CL488-20568) at dilution of 1:200.



1x10<sup>6</sup> HepG2 cells were intracellularly stained with 0.8 ug CoraLite® Plus 488 Prdx1 Polyclonal Antibody (CL488-20568)(red), or 0.8 ug CoraLite® Plus 488-conjugated Rabbit IgG control Rabbit PolyAb (CL488-30000) (blue). Cells were fixed with 4% PFA and permeabilized with Flow Cytometry Perm Buffer (PF00011-C).