

For Research Use Only

CoraLite® Plus 488-conjugated SLK Polyclonal antibody

Catalog Number:CL488-19743



Basic Information

Catalog Number: CL488-19743	GenBank Accession Number: NM_014720	Purification Method: Antigen affinity purification
Size: 100ul , Concentration: 1000 ug/ml by Nanodrop;	GeneID (NCBI): 9748	Recommended Dilutions: IF/ICC 1:50-1:500
Source: Rabbit	UNIPROT ID: Q9H2G2	Excitation/Emission maxima wavelengths: 493 nm / 522 nm
Isotype: IgG	Full Name: STE20-like kinase (yeast)	
	Calculated MW: 143 kDa	
	Observed MW: 143-160 kDa, 210-220 kDa	

Applications

Tested Applications: IF/ICC	Positive Controls: IF/ICC : HepG2 cells,
Species Specificity: human	

Background Information

SLK, also named as KIAA0204 and STK2, belongs to the protein kinase superfamily, STE Ser/Thr protein kinase family and STE20 subfamily. SLK plays an important role in cell proliferation and cytoskeletal remodeling. In fibroblasts, SLK has been shown to respond to FAK/Src signaling and regulate focal adhesion turnover through Paxillin phosphorylation. Full-length SLK (~220 kDa) has also been shown to be essential for embryonic development. In myoblasts, the overexpression of a dominant negative SLK is sufficient to block myoblast fusion. (PMID: 28153048, PMID: 25882817, PMID: 23815977)

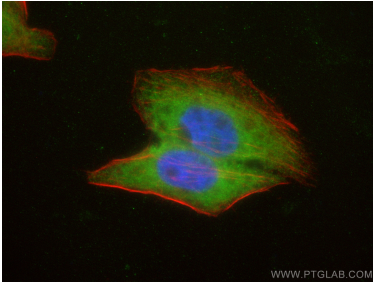
Storage

Storage:
Store at -20°C. Avoid exposure to light. Stable for one year after shipment.
Storage Buffer:
PBS with 50% Glycerol, 0.05% Proclin300, 0.5% BSA, pH 7.3.
Aliquoting is unnecessary for -20°C storage

For technical support and original validation data for this product please contact:
T: 1 (888) 4PTGLAB (1-888-478-4522) (toll free in USA), or 1(312) 455-8498 (outside USA)
E: proteintech@ptglab.com
W: ptglab.com

This product is exclusively available under Proteintech Group brand and is not available to purchase from any other manufacturer.

Selected Validation Data



Immunofluorescent analysis of (4% PFA) fixed HepG2 cells using CoraLite® Plus 488 SLK antibody (CL488-19743) at dilution of 1:200, CL594-Phalloidin (red).