

For Research Use Only

CoraLite® Plus 488-conjugated GYPC Polyclonal antibody

Catalog Number:CL488-18147



Basic Information

Catalog Number: CL488-18147	GenBank Accession Number: BC106051	Purification Method: Antigen affinity purification
Size: 100ul , Concentration: 1000 ug/ml by Nanodrop;	GeneID (NCBI): 2995	Recommended Dilutions: IF/ICC 1:50-1:500
Source: Rabbit	UNIPROT ID: P04921	Excitation/Emission maxima wavelengths: 493 nm / 522 nm
Isotype: IgG	Full Name: glycophorin C (Gerbich blood group)	
Immunogen Catalog Number: AG12825	Calculated MW: 128 aa, 14 kDa	
	Observed MW: 37 kDa	

Applications

Tested Applications: IF/ICC	Positive Controls: IF/ICC : K-562 cells,
Species Specificity: human	

Background Information

Glycophorin-C, encoded by the GYPC gene, is a minor sialoglycoprotein in human erythrocyte membranes. Glycophorin-C interacts with protein 4.1R (EPB41) and plays an important role in regulating the mechanical stability of red cells. Glycophorin C acts as the receptor for the Plasmodium falciparum erythrocyte binding ligand PfEBP-2 (baebl). Glycophorin-D, also encoded by the GYPC gene, is now known as a variant of Glycophorin-C. This antibody is raised against the full-length protein of human Glycophorin-C. The apparent molecular weight of Glycophorin-C is larger than the calculated molecular weight due to glycosylation.

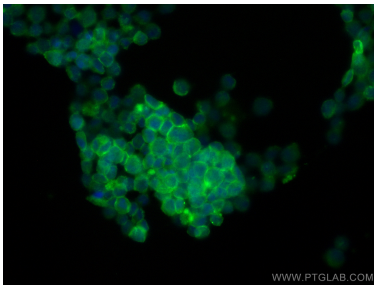
Storage

Storage:
Store at -20°C. Avoid exposure to light. Stable for one year after shipment.
Storage Buffer:
PBS with 50% Glycerol, 0.05% Proclin300, 0.5% BSA, pH 7.3.
Aliquoting is unnecessary for -20°C storage

For technical support and original validation data for this product please contact:
T: 1 (888) 4PTGLAB (1-888-478-4522) (toll free in USA), or 1(312) 455-8498 (outside USA)
E: proteintech@ptglab.com
W: ptglab.com

This product is exclusively available under Proteintech Group brand and is not available to purchase from any other manufacturer.

Selected Validation Data



Immunofluorescent analysis of (4% PFA) fixed K-562 cells using CoraLite® Plus 488 GYPC antibody (CL488-18147) at dilution of 1:200.