

For Research Use Only

CoraLite® Plus 488-conjugated MRPL42 Polyclonal antibody

Catalog Number:CL488-17300



Basic Information

Catalog Number: CL488-17300	GenBank Accession Number: BC040240	Purification Method: Antigen affinity purification
Size: 100ul , Concentration: 1000 ug/ml by Nanodrop;	GeneID (NCBI): 28977	Recommended Dilutions: IF/ICC 1:50-1:500
Source: Rabbit	UNIPROT ID: Q9Y6G3	Excitation/Emission maxima wavelengths: 493 nm / 522 nm
Isotype: IgG	Full Name: mitochondrial ribosomal protein L42	
Immunogen Catalog Number: AG11181	Calculated MW: 142 aa, 17 kDa	
	Observed MW: 14-17 kDa	

Applications

Tested Applications: IF/ICC, FC (Intra)	Positive Controls: IF/ICC : HeLa cells,
Species Specificity: human	

Storage

Storage:
Store at -20°C. Avoid exposure to light. Stable for one year after shipment.

Storage Buffer:
PBS with 50% Glycerol, 0.05% Proclin300, 0.5% BSA, pH 7.3.

Aliquoting is unnecessary for -20°C storage

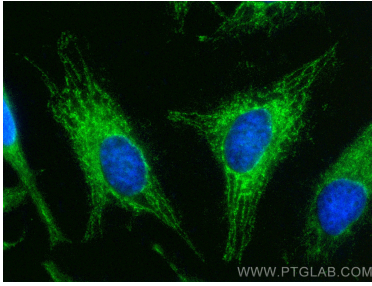
For technical support and original validation data for this product please contact:

T: 1 (888) 4PTGLAB (1-888-478-4522) (toll free in USA), or 1(312) 455-8498 (outside USA)

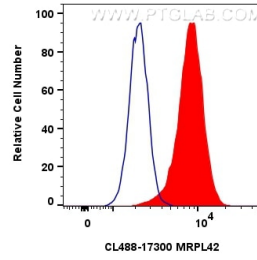
E: proteintech@ptglab.com
W: ptglab.com

This product is exclusively available under Proteintech Group brand and is not available to purchase from any other manufacturer.

Selected Validation Data



Immunofluorescent analysis of (-20°C Ethanol) fixed HeLa cells using Coralite® Plus 488 MRPL42 antibody (CL488-17300) at dilution of 1:200.



1x10⁶ HeLa cells were intracellularly stained with 0.4 ug Coralite® Plus 488 Mrpl42 Polyclonal Antibody (CL488-17300)(red), or 0.4 ug Coralite® Plus 488-conjugated Rabbit IgG control Rabbit PolyAb (CL488-30000) (blue). Cells were fixed with 4% PFA and permeabilized with Flow Cytometry Perm Buffer (PF00011-C).