

For Research Use Only

CoraLite® Plus 488-conjugated CD14 Polyclonal antibody

Catalog Number: CL488-17000



Basic Information

Catalog Number: CL488-17000	GenBank Accession Number: BC010507	Purification Method: Antigen affinity purification
Size: 100ul , Concentration: 1000 ug/ml by Nanodrop;	GeneID (NCBI): 929	Recommended Dilutions: IF-P 1:200-1:800
Source: Rabbit	ENSEMBL Gene ID: ENSG00000170458	Excitation/Emission maxima wavelengths: 493 nm / 522 nm
Isotype: IgG	UNIPROT ID: P08571	
Immunogen Catalog Number: AG10693	Full Name: CD14 molecule	
	Calculated MW: 375 aa, 40 kDa	

Applications

Tested Applications: IF-P	Positive Controls: IF-P : human tonsillitis tissue,
Species Specificity: human	

Background Information

CD14 is a 50-55 kDa glycosylphosphatidylinositol-anchored glycoprotein preferentially expressed on monocytes and macrophages, and at lower levels on granulocytes (PMID: 3385210; 2462937; 7685797). CD14 can also exist as a soluble protein. CD14 acts as a co-receptor for bacterial liposaccharides (LPS) (PMID: 1698311). It plays a major role in the inflammatory response of monocytes to LPS.

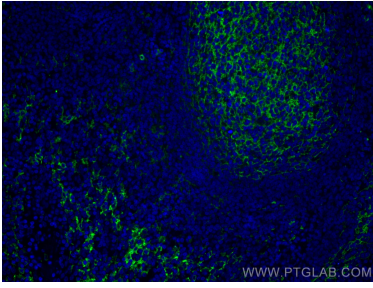
Storage

Storage:
Store at -20°C. Avoid exposure to light. Stable for one year after shipment.
Storage Buffer:
PBS with 50% Glycerol, 0.05% Proclin300, 0.5% BSA, pH 7.3.
Aliquoting is unnecessary for -20°C storage

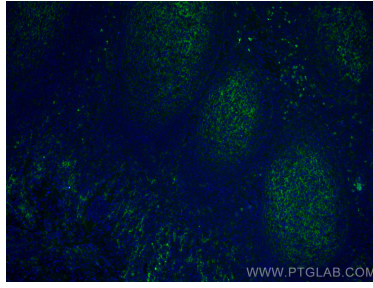
For technical support and original validation data for this product please contact:
T: 1 (888) 4PTGLAB (1-888-478-4522) (toll free in USA), or 1(312) 455-8498 (outside USA)
E: proteintech@ptglab.com
W: ptglab.com

This product is exclusively available under Proteintech Group brand and is not available to purchase from any other manufacturer.

Selected Validation Data



Immunofluorescent analysis of (4% PFA) fixed human tonsillitis tissue using CoraLite® Plus 488 CD14 antibody (CL488-17000) at dilution of 1:400.



Immunofluorescent analysis of (4% PFA) fixed human tonsillitis tissue using CoraLite® Plus 488 CD14 antibody (CL488-17000) at dilution of 1:400.