

For Research Use Only

CoraLite® Plus 488-conjugated GFAP Polyclonal antibody



Catalog Number: CL488-16825

Featured Product

1 Publications

Basic Information

Catalog Number: CL488-16825	GenBank Accession Number: BC013596	Purification Method: Antigen affinity purification
Size: 100ul , Concentration: 1000 µg/ml by Nanodrop;	GeneID (NCBI): 2670	Recommended Dilutions: IF 1:50-1:500
Source: Rabbit	Full Name: glial fibrillary acidic protein	Excitation/Emission maximum wavelengths: 488 nm / 515 nm
Isotype: IgG	Calculated MW: 432 aa, 50 kDa	
Immunogen Catalog Number: AG10423	Observed MW: 45-50 kDa	

Applications

Tested Applications: IF	Positive Controls: IF : rat brain tissue, mouse brain tissue
Cited Applications: IF	
Species Specificity: human, mouse, rat	
Cited Species: mouse	

Background Information

GFAP (Glial fibrillary acidic protein), an intermediate-filament (IF) protein, is specifically expressed in cells of astroglial lineage and is widely used to mark astroglia in the brain. It is also used as a marker for intracranial and intraspinal tumors arising from astrocytes.

Notable Publications

Author	Pubmed ID	Journal	Application
Yue Wan	36598105	Glia	IF

Storage

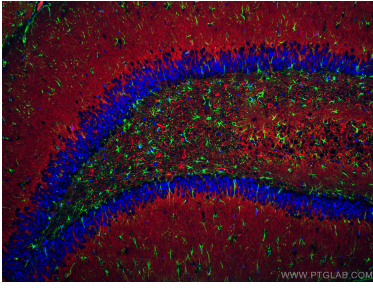
Storage:
Store at -20°C. Avoid exposure to light.
Storage Buffer:
PBS with 50% Glycerol, 0.05% Proclin300, 0.5% BSA, pH 7.3.
Aliquoting is unnecessary for -20°C storage

*** 20ul sizes contain 0.1% BSA

For technical support and original validation data for this product please contact:
T: 1 (888) 4PTGLAB (1-888-478-4522) (toll free in USA), or 1(312) 455-8498 (outside USA)
E: proteintech@ptglab.com
W: ptglab.com

This product is exclusively available under Proteintech Group brand and is not available to purchase from any other manufacturer.

Selected Validation Data



Immunofluorescent analysis of (4% PFA) fixed rat brain tissue using CoraLite® Plus 488 GFAP antibody (CL488-16825) at dilution of 1:200, CoraLite®594 MAP2 antibody (CL594-17490, red), DAPI (blue).