

For Research Use Only

# CoraLite® Plus 488-conjugated EXOSC10 Polyclonal antibody

Catalog Number:CL488-16731

Featured Product



## Basic Information

**Catalog Number:**

CL488-16731

**Size:**

100ul , Concentration: 1000 ug/ml by Nanodrop;

**Source:**

Rabbit

**Isotype:**

IgG

**Immunogen Catalog Number:**

AG10189

**GenBank Accession Number:**

BC073788

**GeneID (NCBI):**

5394

**UNIPROT ID:**

Q01780

**Full Name:**

exosome component 10

**Calculated MW:**

885 aa, 101 kDa

**Observed MW:**

100 kDa

**Purification Method:**

Antigen affinity purification

**Recommended Dilutions:**

IF/ICC 1:50-1:500

**Excitation/Emission maxima wavelengths:**

493 nm / 522 nm

## Applications

**Tested Applications:**

IF/ICC, FC (Intra)

**Species Specificity:**

human, mouse

**Positive Controls:**

IF/ICC : HeLa cells,

## Background Information

About 50% of patients with polymyositis/scleroderma (PM-Scl) overlap syndrome are reported to have autoantibodies to a nuclear/nucleolar particle termed PM-Scl. Exosome component 10 (EXOSC10), also named autoantigen PM/Scl 2, is the 100 kDa antigen component of PM-Scl and is recognized by most sera of PM-Scl patients. EXOSC10 is strongly enriched in the nucleolus and a small amount has been found in cytoplasm supporting the existence of a nucleolar RNA exosome complex form. As a putative catalytic component of the RNA exosome complex which has 3'->5' exoribonuclease activity, EXOSC10 participates in a multitude of cellular RNA processing and degradation events.

## Storage

**Storage:**

Store at -20°C. Avoid exposure to light. Stable for one year after shipment.

**Storage Buffer:**

PBS with 50% Glycerol, 0.05% Proclin300, 0.5% BSA, pH 7.3.

Aliquoting is unnecessary for -20°C storage

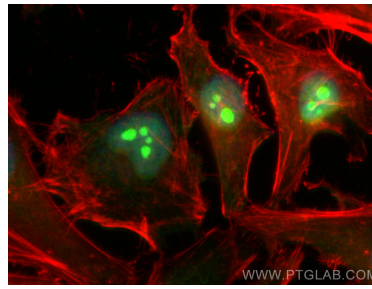
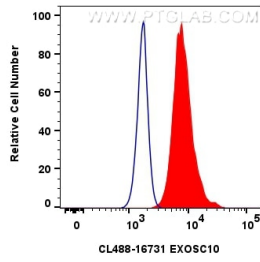
For technical support and original validation data for this product please contact:

T: 1 (888) 4PTGLAB (1-888-478-4522) (toll free in USA), or 1(312) 455-8498 (outside USA)

E: proteintech@ptglab.com  
W: ptglab.com

**This product is exclusively available under Proteintech Group brand and is not available to purchase from any other manufacturer.**

## Selected Validation Data



$1 \times 10^6$  HeLa cells were intracellularly stained with 0.4 ug CoraLite® Plus 488 Exosc10 Polyclonal Antibody (CL488-16731)(red), or 0.4 ug CoraLite® Plus 488-conjugated Rabbit IgG control Rabbit PolyAb (CL488-30000) (blue). Cells were fixed with 4% PFA and permeabilized with Flow Cytometry Perm Buffer (PF00011-C).

Immunofluorescent analysis of (4% PFA) fixed HeLa cells using CoraLite® Plus 488 EXOSC10 antibody (CL488-16731) at dilution of 1:200, CL594-Phalloidin (red).