

For Research Use Only

CoraLite® Plus 488-conjugated RAB11A/B Polyclonal antibody



Catalog Number: CL488-15903

Featured Product

Basic Information

Catalog Number:

CL488-15903

Size:

100ul, Concentration: 1000 µg/ml by Nanodrop;

Source:

Rabbit

Isotype:

IgG

Immunogen Catalog Number:

AG8742

GenBank Accession Number:

BC013348

GeneID (NCBI):

8766

UNIPROT ID:

P62491

Full Name:

RAB11A, member RAS oncogene family

Calculated MW:

216 aa, 24 kDa

Observed MW:

24 kDa

Purification Method:

Antigen affinity purification

Recommended Dilutions:

IF 1:50-1:500

Excitation/Emission maxima wavelengths:

493 nm / 522 nm

Applications

Tested Applications:

IF

Species Specificity:

human, mouse

Positive Controls:

IF : HepG2 cells, U2OS cells

Background Information

RAB11 has two isoform genes RAB11A(YL8) and RAB11B(YPT3), and belongs to the small GTPase superfamily and Rab family. It regulates endocytic recycling. RAB11 may exert its functions by interacting with multiple effector proteins in different complexes. It acts as a major regulator of membrane delivery during cytokinesis. RAB11 regulates the recycling of FCGR2 (receptor of Fc region of monomeric Ig G) to basolateral membranes. This antibody can recognize both RAB11A(24 kDa) and RAB11B(24 kDa).

Storage

Storage:

Store at -20°C. Avoid exposure to light. Stable for one year after shipment.

Storage Buffer:

PBS with 50% Glycerol, 0.05% Proclin300, 0.5% BSA, pH 7.3.

Aliquoting is unnecessary for -20°C storage

*** 20ul sizes contain 0.1% BSA

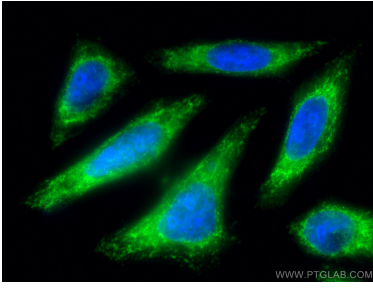
For technical support and original validation data for this product please contact:

T: 1 (888) 4PTGLAB (1-888-478-4522) (toll free in USA), or 1(312) 455-8498 (outside USA)

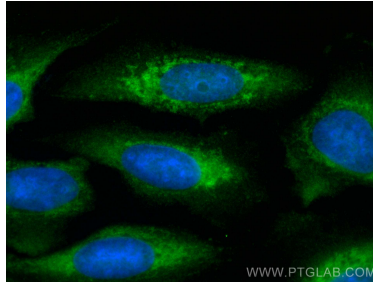
E: proteintech@ptglab.com
W: ptglab.com

This product is exclusively available under Proteintech Group brand and is not available to purchase from any other manufacturer.

Selected Validation Data



Immunofluorescent analysis of (-20°C Methanol) fixed HepG2 cells using CoraLite® Plus 488 RAB11A/B antibody (CL488-15903) at dilution of 1:200.



Immunofluorescent analysis of (-20°C Methanol) fixed U2OS cells using CoraLite® Plus 488 RAB11A/B antibody (CL488-15903) at dilution of 1:100.