

For Research Use Only

CoraLite® Plus 488-conjugated VAPA Polyclonal antibody

Catalog Number: CL488-15275

Featured Product



Basic Information

Catalog Number:

CL488-15275

Size:

100ul , Concentration: 1000 ug/ml by Nanodrop;

Source:

Rabbit

Isotype:

IgG

Immunogen Catalog Number:

AG7393

GenBank Accession Number:

BC002992

GeneID (NCBI):

9218

UNIPROT ID:

Q9P0LO

Full Name:

VAMP (vesicle-associated membrane protein)-associated protein A, 33kDa

Calculated MW:

28 kDa

Observed MW:

28-30 kDa

Purification Method:

Antigen affinity purification

Recommended Dilutions:

IF/ICC 1:50-1:500

Excitation/Emission maxima wavelengths:

493 nm / 522 nm

Applications

Tested Applications:

IF/ICC, FC (Intra)

Species Specificity:

human, mouse, rat

Positive Controls:

IF/ICC : HepG2 cells,

Background Information

VAPA (Vesicle-associated membrane protein-associated protein A), also known as VAP33, is a ubiquitously expressed integral membrane protein of the VAMP-associated protein (VAP) family. It is present in the plasma membrane and in intracellular vesicles, playing a role in vesicle trafficking.

Storage

Storage:

Store at -20°C. Avoid exposure to light. Stable for one year after shipment.

Storage Buffer:

PBS with 50% Glycerol, 0.05% Proclin300, 0.5% BSA, pH 7.3.

Aliquoting is unnecessary for -20°C storage

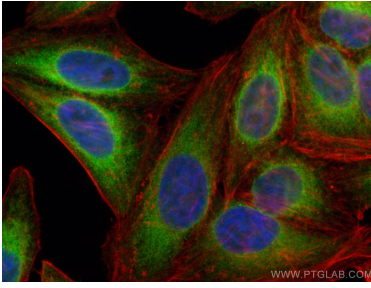
For technical support and original validation data for this product please contact:

T: 1 (888) 4PTGLAB (1-888-478-4522) (toll free in USA), or 1(312) 455-8498 (outside USA)

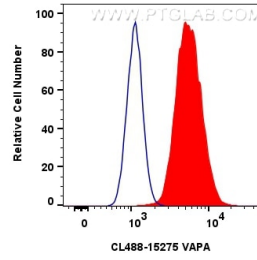
E: proteintech@ptglab.com
W: ptglab.com

This product is exclusively available under Proteintech Group brand and is not available to purchase from any other manufacturer.

Selected Validation Data



Immunofluorescent analysis of (4% PFA) fixed HepG2 cells using Coralite® Plus 488 VAPA antibody (CL488-15275) at dilution of 1:200, CL594-Phalloidin (red).



1x10⁶ HepG2 cells were intracellularly stained with 0.4 ug Coralite® Plus 488 VAPA Polyclonal Antibody (CL488-15275)(red), or 0.4 ug Coralite® Plus 488-conjugated Rabbit IgG control Rabbit PolyAb (CL488-30000) (blue). Cells were fixed with 4% PFA and permeabilized with Flow Cytometry Perm Buffer (PF00011-C).