

For Research Use Only

CoraLite® Plus 488-conjugated ISCU Polyclonal antibody

Catalog Number: CL488-14812

Featured Product



Basic Information

Catalog Number:

CL488-14812

Size:

100ul, Concentration: 1000 ug/ml by Nanodrop;

Source:

Rabbit

Isotype:

IgG

Immunogen Catalog Number:

AG6562

GenBank Accession Number:

BC061903

GeneID (NCBI):

23479

UNIPROT ID:

Q9H1K1

Full Name:

iron-sulfur cluster scaffold homolog (E. coli)

Calculated MW:

18 kDa

Observed MW:

14-15 kDa, 18-19 kDa

Purification Method:

Antigen affinity purification

Recommended Dilutions:

IF/ICC 1:50-1:500

Excitation/Emission maxima wavelengths:

493 nm / 522 nm

Applications

Tested Applications:

IF/ICC

Species Specificity:

human, mouse, rat

Positive Controls:

IF/ICC : MCF-7 cells,

Background Information

Iron-sulfur (Fe-S) clusters are required for the functions of mitochondrial aconitase, mammalian iron regulatory protein 1, and many other proteins in multiple subcellular compartments. Mitochondrial and cytosolic isoforms of the human Fe-S cluster scaffold protein, iron-sulfur cluster assembly enzyme (ISCU), is involved in activation of iron uptake, redistribution of intracellular iron, and decreased utilization of iron in Fe-S proteins. Defects in ISCU gene are the cause of myopathy with exercise intolerance Swedish type (MEIS), which is characterized by lifelong severe exercise intolerance (PMID: 18304497). Two ISCU isoforms ISCU1 (cytosolic, 15 kDa) and ISCU2 (mitochondrial, 18 kDa), were produced by alternative splicing, and ISCU2 is considered the canonical isoform1. ISCU2 protein is rapidly processed upon maturation (PMID: 11060020). Proteintech's ISCU antibody 14812-1-AP is raised against the full-length ISCU2 and is expected to detect 14 kDa, 15 kDa and 18-19 kDa bands which has been reported in the previous observation (PMID: 11060020).

Storage

Storage:

Store at -20°C. Avoid exposure to light. Stable for one year after shipment.

Storage Buffer:

PBS with 50% Glycerol, 0.05% Proclin300, 0.5% BSA, pH 7.3.

Aliquoting is unnecessary for -20°C storage

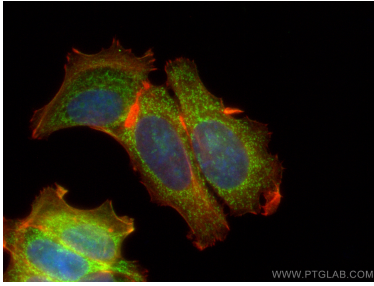
For technical support and original validation data for this product please contact:

T: 1 (888) 4PTGLAB (1-888-478-4522) (toll free in USA), or 1(312) 455-8498 (outside USA)

E: proteintech@ptglab.com
W: ptglab.com

This product is exclusively available under Proteintech Group brand and is not available to purchase from any other manufacturer.

Selected Validation Data



Immunofluorescent analysis of (4% PFA) fixed MCF-7 cells using Coralite® Plus 488 ISCU antibody (CL488-14812) at dilution of 1:200, CL594-Phalloidin (red).