

For Research Use Only

CoraLite® Plus 488-conjugated CEP250/CNAP1 Polyclonal antibody



Catalog Number: CL488-14498

Basic Information

Catalog Number: CL488-14498	GenBank Accession Number: BC001433	Purification Method: Antigen affinity purification
Size: 100ul , Concentration: 1000 µg/ml by Nanodrop;	GeneID (NCBI): 11190	Recommended Dilutions: IF 1:50-1:500
Source: Rabbit	Full Name: centrosomal protein 250kDa	Excitation/Emission maxima wavelengths: 488 nm / 515 nm
Isotype: IgG	Calculated MW: 281 kDa	
Immunogen Catalog Number: AG5925	Observed MW: 250 kDa	

Applications

Tested Applications: IF	Positive Controls: IF : HeLa cells, MCF-7 cells
Species Specificity: human	

Background Information

CEP250, also known as C-Nap1, is a 250 kDa coiled-coil protein that localizes to the proximal ends of mother and daughter centrioles. It is required for centriole-centriole cohesion during interphase of the cell cycle. It dissociates from the centrosomes when parental centrioles separate at the beginning of mitosis. The protein associates with and is phosphorylated by NIMA-related kinase 2, which is also associated with the centrosome.

Storage

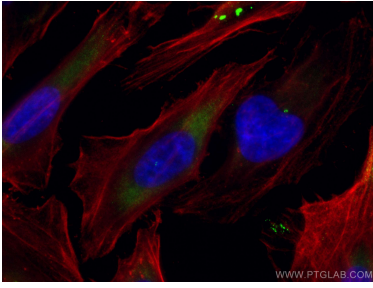
Storage:
Store at -20°C. Avoid exposure to light.
Storage Buffer:
PBS with 50% Glycerol, 0.05% Proclin300, 0.5% BSA, pH 7.3.
Aliquoting is unnecessary for -20°C storage

*** 20ul sizes contain 0.1% BSA

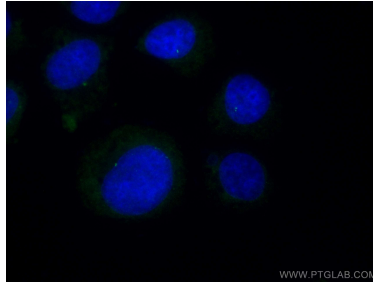
For technical support and original validation data for this product please contact:
T: 1 (888) 4PTGLAB (1-888-478-4522) (toll free in USA), or 1(312) 455-8498 (outside USA) E: proteintech@ptglab.com W: ptglab.com

This product is exclusively available under Proteintech Group brand and is not available to purchase from any other manufacturer.

Selected Validation Data



Immunofluorescent analysis of (-20°C Methanol) fixed HeLa cells using CoraLite® Plus 488 CEP250/CNAP1 antibody (CL488-14498) at dilution of 1:100, CoraLite® 594 Beta Actin antibody (CL594-66009, Clone: 2D4H5, red).



Immunofluorescent analysis of (-20°C Ethanol) fixed MCF-7 cells using CoraLite® Plus 488 CEP250/CNAP1 antibody (CL488-14498) at dilution of 1:100.