

For Research Use Only

# CoraLite®488-conjugated smooth muscle actin Polyclonal antibody



Catalog Number: **CL488-14395**

## Basic Information

Catalog Number: CL488-14395	GenBank Accession Number: BC017554	Purification Method: Antigen affinity purification
Size: 100UL, Concentration: 1000 µg/ml by 59 Nanodrop;	GeneID (NCBI): 59	Recommended Dilutions: IF 1:50-1:500
Source: Rabbit	Full Name: actin, alpha 2, smooth muscle, aorta	Excitation/Emission maxima wavelengths: 488 nm/515 nm
Isotype: IgG	Calculated MW: 377 aa, 42 kDa	
Immunogen Catalog Number: AG5886	Observed MW: 43 kDa	

## Applications

Tested Applications: IF	Positive Controls: IF : mouse heart tissue,
Species Specificity: human, mouse, rat	

## Background Information

ACTA2 (also known as  $\alpha$ -smooth muscle actin or  $\alpha$ -SMA) belongs to the actin family. Actins are highly conserved proteins that are involved in various types of cell motility and are ubiquitously expressed in all eukaryotic cells. ACTA2 is primarily expressed in vascular smooth muscle and anti-ACTA2 is commonly used to marker smooth muscle cells. This antibody may cross-react with other isoforms of actins.

## Storage

**Storage:**  
Store at -20°C. Avoid exposure to light.  
**Storage Buffer:**  
PBS with 50% Glycerol, 0.05% Proclin300, 0.5% BSA, pH 7.3.  
Aliquoting is unnecessary for -20°C storage

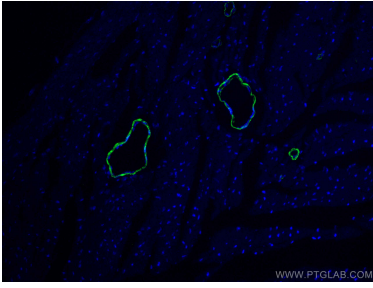
For technical support and original validation data for this product please contact:

T: 1 (888) 4PTGLAB (1-888-478-4522) (toll free  
in USA), or 1(312) 455-8498 (outside USA)

E: [proteintech@ptglab.com](mailto:proteintech@ptglab.com)  
W: [ptglab.com](http://ptglab.com)

This product is exclusively available under Proteintech Group brand and is not available to purchase from any other manufacturer.

## Selected Validation Data



Immunofluorescent analysis of (4% PFA) fixed mouse heart tissue using CoraLite®488 smooth muscle actin antibody (CL488-14395) at dilution of 1:200.