

For Research Use Only

CoraLite® Plus 488-conjugated Mx1 Polyclonal antibody



Catalog Number: CL488-13750

Featured Product

1 Publications

Basic Information

Catalog Number: CL488-13750	GenBank Accession Number: BC032602	Purification Method: Antigen affinity purification
Size: 100ul , Concentration: 1000 µg/ml by Nanodrop;	GeneID (NCBI): 4599	Excitation/Emission maxima wavelengths: 493 nm / 522 nm
Source: Rabbit	UNIPROT ID: P20591	
Isotype: IgG	Full Name: Myxovirus resistance protein 1	
Immunogen Catalog Number: AG4692	Calculated MW: 662 aa, 76 kDa	
	Observed MW: 76 kDa	

Applications

Tested Applications:
FC (Intra)

Cited Applications:
FC

Species Specificity:
human, mouse

Cited Species:
mouse

Background Information

Mx1 (also known as MxA) is a GTPase that belongs to the Mx family of proteins, which are ubiquitous in eukaryotes and involved in the immune response to viral infections. The human Mx1 is localized in the cytoplasm interfering with the translation of viral proteins, whereas the mouse Mx1 accumulates in the nucleus and inhibits the primary transcription of viral RNA. Mx1 expression is induced by treatment with α/β IFN. This antibody can recognize the endogenous Mx1 protein in several tissues like lung and spleen.

Notable Publications

Author	Pubmed ID	Journal	Application
Yong Zhu	38438885	Small	FC

Storage

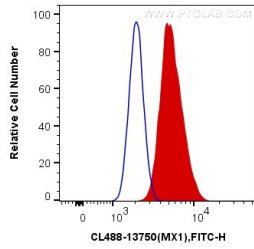
Storage:
Store at -20°C. Avoid exposure to light. Stable for one year after shipment.
Storage Buffer:
PBS with 50% Glycerol, 0.05% Proclin300, 0.5% BSA, pH 7.3.
Aliquoting is unnecessary for -20°C storage

*** 20ul sizes contain 0.1% BSA

For technical support and original validation data for this product please contact:
T: 1 (888) 4PTGLAB (1-888-478-4522) (toll free in USA), or 1(312) 455-8498 (outside USA)
E: proteintech@ptglab.com
W: ptglab.com

This product is exclusively available under Proteintech Group brand and is not available to purchase from any other manufacturer.

Selected Validation Data



1X10⁶ A549 cells were intracellularly stained with 0.4 ug CoraLite® Plus 488 Anti-Human MX1 (CL488-13750) (red), or 0.4 ug Control Antibody. Cells were fixed with 4% PFA and permeabilized with Flow Cytometry Perm Buffer (PF00011-C).