

For Research Use Only

CoraLite® Plus 488-conjugated HSPA2 Polyclonal antibody



Catalog Number: CL488-12797

Featured Product

Basic Information

Catalog Number:

CL488-12797

Size:

100ul, Concentration: 1000 µg/ml by Nanodrop;

Source:

Rabbit

Isotype:

IgG

Immunogen Catalog Number:

AG3539

GenBank Accession Number:

BC036107

GeneID (NCBI):

3306

UNIPROT ID:

P54652

Full Name:

heat shock 70kDa protein 2

Calculated MW:

639 aa, 70 kDa

Observed MW:

70 kDa

Purification Method:

Antigen affinity purification

Recommended Dilutions:

IF/ICC 1:50-1:500

Excitation/Emission maxima wavelengths:

493 nm / 522 nm

Applications

Tested Applications:

IF

Species Specificity:

human, mouse, rat

Positive Controls:

IF/ICC : HeLa cells,

Background Information

Human HSPA2 is a member of the HSPA (HSP70) family of heat-shock proteins, encoded by the gene originally described as testis-specific. Recently, it has been reported that HSPA2 can be also expressed in human somatic tissues in a cell-type specific manner. HSPA2 is a cytosol/nuclear protein able to translocate between cytoplasm and nucleus. HSPA2 is involved in sperm maturity, function and fertility. Aberrant expression of HSPA2 in testes has been connected with male infertility. Recently, HSPA2 has attracted increased interest due to its possible involvement in carcinogenesis of non-testicular tissues. This antibody well recognized the endogenous HSPA2 protein in testis and multiple cell lines. (21373891)

Storage

Storage:

Store at -20°C. Avoid exposure to light. Stable for one year after shipment.

Storage Buffer:

PBS with 50% Glycerol, 0.05% Proclin300, 0.5% BSA, pH 7.3.

Aliquoting is unnecessary for -20°C storage

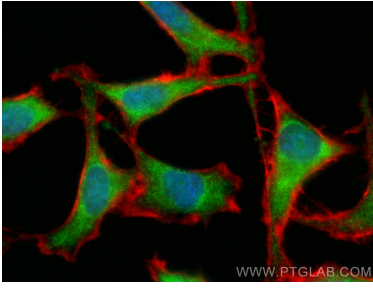
For technical support and original validation data for this product please contact:

T: 1 (888) 4PTGLAB (1-888-478-4522) (toll free in USA), or 1(312) 455-8498 (outside USA)

E: proteintech@ptglab.com
W: ptglab.com

This product is exclusively available under Proteintech Group brand and is not available to purchase from any other manufacturer.

Selected Validation Data



Immunofluorescent analysis of (-20°C Ethanol) fixed HeLa cells using CoraLite® Plus 488 HSPA2 antibody (CL488-12797) at dilution of 1:200, CL594-Phalloidin (red).