

For Research Use Only

# CoraLite® Plus 488-conjugated MAGEB4 Polyclonal antibody

Catalog Number: CL488-12786



## Basic Information

<b>Catalog Number:</b> CL488-12786	<b>GenBank Accession Number:</b> BC032852	<b>Purification Method:</b> Antigen affinity purification
<b>Size:</b> 100ul , Concentration: 1000 ug/ml by Nanodrop;	<b>GeneID (NCBI):</b> 4115	<b>Recommended Dilutions:</b> IF/ICC 1:50-1:500
<b>Source:</b> Rabbit	<b>UNIPROT ID:</b> O15481	<b>Excitation/Emission maxima wavelengths:</b> 493 nm / 522 nm
<b>Isotype:</b> IgG	<b>Full Name:</b> melanoma antigen family B, 4	
<b>Immunogen Catalog Number:</b> AG3502	<b>Calculated MW:</b> 346 aa, 39 kDa	
	<b>Observed MW:</b> 40 kDa	

## Applications

<b>Tested Applications:</b> IF/ICC, FC (Intra)	<b>Positive Controls:</b> IF/ICC : HepG2 cells,
<b>Species Specificity:</b> human, mouse	

## Storage

<b>Storage:</b> Store at -20°C. Avoid exposure to light. Stable for one year after shipment.
<b>Storage Buffer:</b> PBS with 50% Glycerol, 0.05% Proclin300, 0.5% BSA, pH 7.3.
<b>Aliquoting is unnecessary for -20°C storage</b>

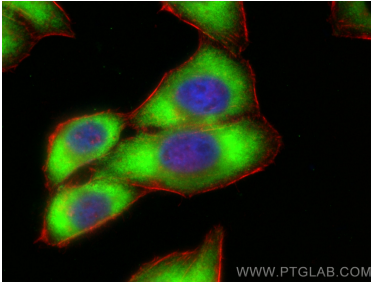
For technical support and original validation data for this product please contact:

T: 1 (888) 4PTGLAB (1-888-478-4522) (toll free  
in USA), or 1(312) 455-8498 (outside USA)

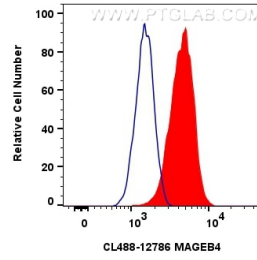
E: proteintech@ptglab.com  
W: ptglab.com

This product is exclusively available under Proteintech Group brand and is not available to purchase from any other manufacturer.

## Selected Validation Data



Immunofluorescent analysis of (-20°C Ethanol) fixed HepG2 cells using CoraLite® Plus 488 MAGEB4 antibody (CL488-12786) at dilution of 1:200, CL594-Phalloidin (red).



$1 \times 10^6$  HepG2 cells were intracellularly stained with 0.8 ug CoraLite® Plus 488 Mageb4 Polyclonal Antibody (CL488-12786)(red), or 0.8 ug CoraLite® Plus 488-conjugated Rabbit IgG control Rabbit PolyAb (CL488-30000) (blue). Cells were fixed with 4% PFA and permeabilized with Flow Cytometry Perm Buffer (PF00011-C).