

For Research Use Only

CoraLite® Plus 488-conjugated KIN17 Polyclonal antibody

Catalog Number:CL488-12313



Basic Information

Catalog Number: CL488-12313	GenBank Accession Number: BC017309	Purification Method: Antigen affinity purification
Size: 100ul , Concentration: 1000 ug/ml by Nanodrop;	GeneID (NCBI): 22944	Recommended Dilutions: IF/ICC 1:50-1:500
Source: Rabbit	UNIPROT ID: O60870	Excitation/Emission maxima wavelengths: 493 nm / 522 nm
Isotype: IgG	Full Name: KIN, antigenic determinant of recA protein homolog (mouse)	
Immunogen Catalog Number: AG2963	Calculated MW: 393 aa, 45 kDa	
	Observed MW: 40 kDa	

Applications

Tested Applications: IF/ICC, FC (Intra)	Positive Controls: IF/ICC : HeLa cells,
Species Specificity: human, mouse, rat	

Background Information

KIN17 (also known as KIN) is an evolutionarily conserved zinc finger nuclear protein. It consists of three motifs, a zinc finger, a nuclear localization signal and a Kyprides-Onzonis-Woese motif that mediates transcription elongation. KIN17 is ubiquitously expressed in human tissues and participates in DNA replication, DNA repair and cell cycle progression. Emerging evidence has indicated the importance of KIN17 in the pathogenesis and progression of tumors (PMID: 28454391). KIN17 has a calculated molecular weight of 45 kDa, this antibody is raised against human KIN17 and detects a band of about 40 kDa.

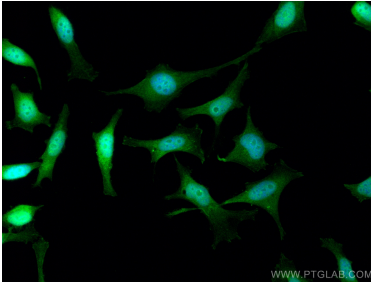
Storage

Storage:
Store at -20°C. Avoid exposure to light. Stable for one year after shipment.
Storage Buffer:
PBS with 50% Glycerol, 0.05% Proclin300, 0.5% BSA, pH 7.3.
Aliquoting is unnecessary for -20°C storage

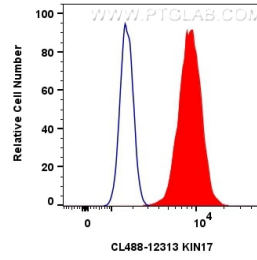
For technical support and original validation data for this product please contact:
T: 1 (888) 4PTGLAB (1-888-478-4522) (toll free in USA), or 1(312) 455-8498 (outside USA)
E: proteintech@ptglab.com
W: ptglab.com

This product is exclusively available under Proteintech Group brand and is not available to purchase from any other manufacturer.

Selected Validation Data



Immunofluorescent analysis of (4% PFA) fixed HeLa cells using CoraLite® Plus 488 KIN17 antibody (CL488-12313) at dilution of 1:200.



1×10^6 HeLa cells were intracellularly stained with 0.8 μ g CoraLite® Plus 488 KIN17 Polyclonal Antibody (CL488-12313) (red), or 0.8 μ g CoraLite® Plus 488-conjugated Rabbit IgG control Rabbit PolyAb (CL488-30000) (blue). Cells were fixed with 4% PFA and permeabilized with Flow Cytometry Perm Buffer (PF00011-C).