

For Research Use Only

CoraLite® Plus 488-conjugated HELLS Polyclonal antibody



Catalog Number: **CL488-11955**

Basic Information

| | | |
|---|--|---|
| Catalog Number: CL488-11955 | GenBank Accession Number: BC031004 | Purification Method: Antigen affinity purification |
| Size: 100ul , Concentration: 1000 µg/ml by Nanodrop; | GeneID (NCBI): 3070 | Recommended Dilutions: IF/ICC 1:50-1:500 |
| Source: Rabbit | UNIPROT ID: Q9NRZ9 | Excitation/Emission maxima wavelengths: 493 nm / 522 nm |
| Isotype: IgG | Full Name: helicase, lymphoid-specific | |
| Immunogen Catalog Number: AG2558 | Calculated MW: 348 aa, 40 kDa, 97 kDa | |
| | Observed MW: 97 kDa | |

Applications

| | |
|---|--|
| Tested Applications: IF/ICC, FC (Intra) | Positive Controls: IF/ICC : HepG2 cells, |
| Species Specificity: human | |

Background Information

Lymphoid-specific helicase(HELLS) is a member of the SNF2 family of chromatin remodeling proteins that is required for development and survival. It's required for de novo or maintenance DNA methylation, which mediated the silencing of the imprinted CDKN1C gene. Also it involved in formation and organization of heterochromatin that regulate transcription and mitosis.

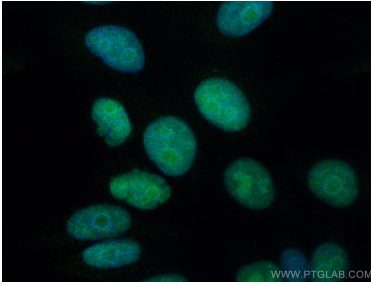
Storage

Storage:
Store at -20°C. Avoid exposure to light. Stable for one year after shipment.
Storage Buffer:
PBS with 50% Glycerol, 0.05% Proclin300, 0.5% BSA, pH 7.3.
Aliquoting is unnecessary for -20°C storage

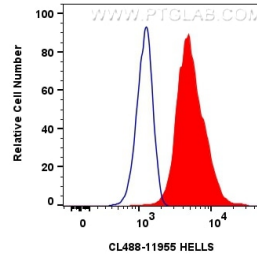
For technical support and original validation data for this product please contact:
T: 1 (888) 4PTGLAB (1-888-478-4522) (toll free in USA), or 1(312) 455-8498 (outside USA)
E: proteintech@ptglab.com
W: ptglab.com

This product is exclusively available under Proteintech Group brand and is not available to purchase from any other manufacturer.

Selected Validation Data



Immunofluorescent analysis of (4% PFA) fixed HepG2 cells using CoraLite® Plus 488 HELLs antibody (CL488-11955) at dilution of 1:200.



1x10⁶ HepG2 cells were intracellularly stained with 0.8 ug CoraLite® Plus 488 HELLs Polyclonal Antibody (CL488-11955)(red), or 0.8 ug CoraLite® Plus 488-conjugated Rabbit IgG control Rabbit PolyAb (CL488-30000) (blue). Cells were fixed and permeabilized with Transcription Factor Staining Buffer Kit (PF00011).