

For Research Use Only

CoraLite® Plus 488-conjugated APOH Polyclonal antibody

Catalog Number: CL488-11892



Basic Information

Catalog Number:

CL488-11892

Size:

100ul , Concentration: 1000 ug/ml by 350 Nanodrop;

Source:

Rabbit

Isotype:

IgG

Immunogen Catalog Number:

AG2500

GenBank Accession Number:

BC026283

GeneID (NCBI):

350

UNIPROT ID:

P02749

Full Name:

apolipoprotein H (beta-2-glycoprotein I)

Calculated MW:

345 aa, 38 kDa

Observed MW:

43-55 kDa

Purification Method:

Antigen affinity purification

Recommended Dilutions:

IF/ICC 1:50-1:500

Excitation/Emission maxima wavelengths:

493 nm / 522 nm

Applications

Tested Applications:

IF/ICC, FC (Intra)

Species Specificity:

human, mouse

Positive Controls:

IF/ICC : HepG2 cells,

Background Information

Apolipoprotein H (ApoH), also known as beta2-glycoprotein I (B2-GPI), is a plasma glycoprotein, primarily synthesized in the liver. It has an important function in blood coagulation and clearance of apoptotic bodies from the circulation. ApoH is also an important actor of host innate immune response through its capacity to bind with high affinity to a large panel of pathogens or their proteins. ApoH is a 54 kDa plasma glycoprotein.

Storage

Storage:

Store at -20°C. Avoid exposure to light. Stable for one year after shipment.

Storage Buffer:

PBS with 50% Glycerol, 0.05% Proclin300, 0.5% BSA, pH 7.3.

Aliquoting is unnecessary for -20°C storage

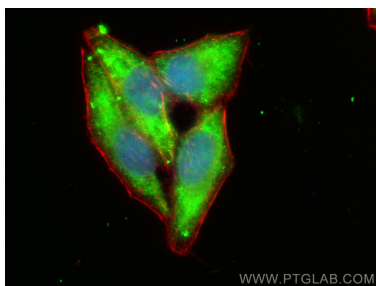
For technical support and original validation data for this product please contact:

T: 1 (888) 4PTGLAB (1-888-478-4522) (toll free in USA), or 1(312) 455-8498 (outside USA)

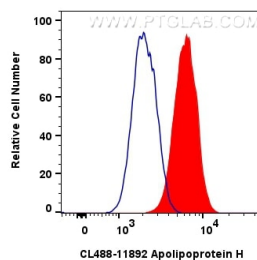
E: proteintech@ptglab.com
W: ptglab.com

This product is exclusively available under Proteintech Group brand and is not available to purchase from any other manufacturer.

Selected Validation Data



Immunofluorescent analysis of (-20°C Ethanol) fixed HepG2 cells using Coralite® Plus 488 Apolipoprotein H antibody (CL488-11892) at dilution of 1:200, CL594-Phalloidin (red).



1x10⁶ HepG2 cells were intracellularly stained with 0.8 ug Coralite® Plus 488 Apolipoprotein H Polyclonal Antibody (CL488-11892)(red), or 0.8 ug Coralite® Plus 488-conjugated Rabbit IgG control Rabbit PolyAb (CL488-30000) (blue). Cells were fixed with 4% PFA and permeabilized with Flow Cytometry Perm Buffer (PF00011-C).